

COR Creative Office Resources

Cumberland County

Office Furniture and Related Services
27 Northport Drive, Portland, ME

JANUARY 25, 2024





JANUARY 25, 2024

WILLIAM TRUFANT
FACILITIES DIRECTOR
CUMBERLAND COUNTY
142 FEDERAL ST., SUITE 1
PORTLAND, ME 04101

RE: CUMBERLAND COUNTY
RFP RESPONSE

Dear William,

Creative Office Resources is delighted to have the opportunity to respond to the Cumberland County RFP. We recognize the power of an inspiring and well-designed space that shapes culture, inspires community and provides employees with a comfortable and functional environment where they can do their best work.

Our team of experts understands the importance of selecting a furniture partner that can provide insight, knowledge and experience from project conception to completion. The COR team is committed to helping Cumberland County with not only the design and delivery of this project, but also in building a productive, positive environment designed to empower the people within it. Empowering, curious, and visionaries are our guiding values.

We would like to offer a few key highlights that differentiate our team and our approach to your RFP request. You will find additional, detailed information for each of these points and other valuable information as you navigate throughout our bid response.

- **A Trusted Partner** - COR has been supporting clients in Maine and beyond for more than 32 years. Our experience working with clients like Cumberland County allows us to understand the unique needs and requirements of government entities such as yours.
- **Cost Saving Contracts** - We will leverage the State of Maine and OMNIA contracts providing the deepest manufacturer discounting available. Open to State and Local Government, these two contracts can be utilized in your product selection and procurement process and have already been competitively solicited and awarded by the State, ensuring fasting quality and the best price point. These contracts are transparent, will save you time, and allow COR to provide you with the best possible product pricing.
- **Problem Solvers, Designers and Doers** - COR's team is committed to supporting our clients with interior solutions that inspire their teams to do exceptional work. In an effort to help you begin to visualize the possibilities for your space, starting on page 35, we have populated the 3rd floor at 27 Northport Drive with two different furniture programming options, Conventional and Mixed. We've taken some liberties in hope that these floor plans will lead to further thought, collaboration and design development with COR and your A+E partner as we work to create a space the best suits your needs.
 - o Within each floorplan type, we are showing a mix of private offices, workstations and meeting spaces. From this, we have come up with a preliminary budget range showing as Good, Better, and Best. This reflects a range of what your project pricing per floor could look like. Please view this as a blank budget. With 300+ manufacturer partners, we will tailor a solution that fits your design aesthetic, budget and project timeline.

- **Visualization Tools and Fly-Throughs** - COR has a dedicated team of design experts to take your design to the next level, through photo-realistic renderings, kit of parts animations, virtual reality and fly-through videos (with all your selected furniture and building finishes included!)

- **Interior Construction** - COR can seamlessly integrate movable, modular walls into your floorplate. From glass office fronts, acoustically sound focus rooms, to 30' folding Leaf walls, our team can provide you the space division and sound reduction you need with the future-proof flexibility you demand.

We want to note that our digital proposal includes links to websites and videos that we believe at value to our submission. We encourage you to review the digital alongside the hard copy if possible. For reference, these links are found on pages 18, 29, and 39.

We thank you for your consideration and know that you will be looking at a number of possible partners to help you meet your goals and objectives. We are excited for the opportunity and are confident our process, experience and ingenuity position us to be that valued partner.

We know this project is long overdue for the County of Cumberland and realize its importance and amount of eyes that will be on it. We recognize this building will change the way current and perspective employees perceive working for the County and want to provide you with a strong, thoughtfully designed work environment to ensure your team's success.

Please reach out to us with any questions - we're here to help.

Sincerely,

Pete Chaput
Vice President, Sales
Creative Office Resources

Executive Summary

Qualifications

- For over 35 years, COR has been in the business of understanding how people interact in a space and creating solutions driven by design beyond aesthetics, including budget and function.
- COR has worked for over 32 years with State of Maine departments, Non-Profits, Schools, and Municipalities, as well as many other government and civic agencies and organizations.
- We are a MillerKnoll Certified Dealer (Platinum Level) with access to products and resources from Herman Miller, Knoll, HAY, Muuto, and more.
- In addition, we carry over 300 additional manufacturers for diverse solutions, quality and functionality giving us the ability to accommodate any budget, aesthetic preference, or functional requirement.

Office Furniture, Install and Coordinated Design Services

- Selecting a furniture partner is a pivotal decision. COR offers a tried and true process, a creative approach, and collaborative methodology that ensures exceptional value from project conception to completion. We are dedicated to building a productive, positive environment that empowers the people within it.
- In our proposal, we share our process, including the how we will provide design services, project management, and order/delivery/install for your project.
- We also provide many additional services like warehousing, maintenance, and trainings that can help to manage, maintain, and use your products in the best way.

Sustainability

- We know the importance of selecting products and manufacturers that prioritize the environment. COR works with manufacturers like MillerKnoll, Humanscale, and many more that have pledged to reduce the environmental impact of their products.
- We will use Ecomedes, an online tool with access to 1,000s of products and their sustainability information, to help Cumberland County make product selections that match your dedication to the environment, as well as project aesthetic, budget, and function goals.

Cost Proposal

- When creating our cost proposal, we considered the information that was provided to us about the purpose of the space, as well as workplace trends, technology, and resources we have access to as a MillerKnoll Certified Dealer.
- We collaborated with COR Studio, our in-house visualization team, to craft layouts that showcase our breadth of product and ability to value engineer based on different requirements. These plans were generated as a foundational step for pricing considerations that included Good, Better, and Best options for the full floor, per workstation, per office, and per conference room. We encourage you to review these plans and provide feedback.
- We understand the importance of assurance in every investment. In our proposal, we have included warranties for the MillerKnoll Collective of Brands. Throughout the design specification process, if other manufacturers are considered and selected, COR will present Cumberland County with necessary warranty and care documents required for maintaining products.

COR at a Glance

35+ Years of Experience

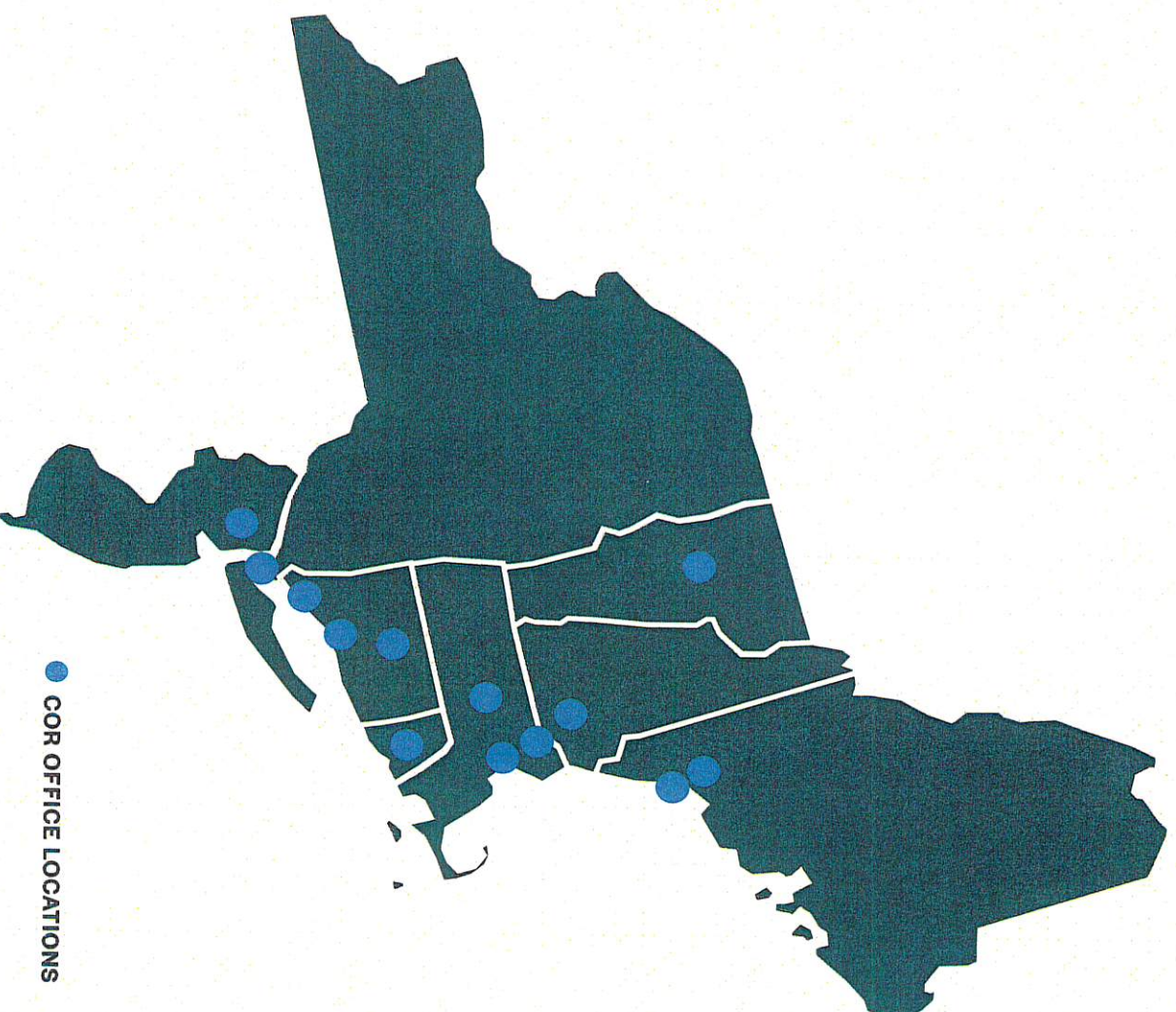
12 Locations & Global Reach

WBENC-Certified WBE

56% Women in Leadership

300+ Manufacturers

MillerKnoll Certified Dealer, Platinum Level



● COR OFFICE LOCATIONS



Local Presence



● COR PORTLAND

141 Middle St
Portland, ME 04101

● COR WAREHOUSE

40 Bradley Dr
Westbrook, ME 04092

Westbrook

● CUMBERLAND COUNTY
27 NORTHPORT DRIVE

COMPANY BACKGROUND

Our team is located in Portland, ME, just **3.2 miles away from the project site.** Creative Office Resources Portland, one of twelve COR offices located throughout New England and Tri-State, sits on the corner of Pearl and Middle Street in the historic Woodman Building in the Old Port. Our Maine location started in 1991 with 7 employees. Today we have 25 full time employees in our office and another 12 employees working out of our distribution center.

Along with our Portland Showroom, we have a 6,000 sq ft secure, climate controlled warehouse with up to 40,000 sq ft of racked space located in Westbrook, **4.8 miles away from the project site.**

This location allows us to provide services like:

- **CAM CHAIR STOCKING PROGRAM**
CAM is an asset management tool that we will use to manage your chair stocking program. We keep extra stock of your specific chairs so when you need more, they are available immediately. Your inventory is available online in real time.
- **MAINTENANCE PROGRAMS**
- **ELECTROSTATIC PAINTING**
- **PANEL RE-UPHOLSTERY & CLEANING**
- **SEATING RE-UPHOLSTERING & REPAIR**
- **WOOD REFINISHING AND TOUCH-UP**
- **PRODUCT TRAINING**
- **SERVICE & WARRANTY**
Our in-house designated service technician has extensive product knowledge that allows us to complete service and warranty requests in-house. In collaboration with our customer service team, we can quickly diagnose issues, determine the parts needed, and complete the repair.

● COR WAREHOUSE

● COR SHOWROOM

Portland



QUALIFICATIONS

OFFICE FURNITURE, INSTALL AND COORDINATED DESIGN SERVICES

SUSTAINABILITY

COST PROPOSAL

CREATIVE OFFICE RESOURCES / CUMBERLAND COUNTY / 7



CREATIVE OFFICE RESOURCES X STATE OF MAINE

We go way back.

COR is so thankful for the continued partnership we have with the State of Maine and its municipalities, non-profits, school districts, and public universities. As furniture experts and workplace specialists, we see first hand the value of having a relationship with your furniture partner that goes further than quoting and installing. We know you and your people, how you work, and what you like.

Take a look back at some of the work we've done with the State of Maine, then look forward at what we plan to do in the future.

32 +
YEARS OF PARTNERSHIP,
SINCE 1992

150 +

MUNICIPALITIES, NON-PROFITS, SCHOOL DISTRICTS, AND PUBLIC UNIVERSITIES

INCLUDING:

- MAINE PUBLIC EMPLOYEE RETIREMENT SYSTEM
- MAINEHOUSING
- YORK COUNTY COURTHOUSE
- CUMBERLAND COUNTY
- & MORE ON NEXT PAGE



RELEVANT EXPERIENCE

Our State of Maine Clients

Admin Office of the Courts	Gorham School Department	RSU 19	SOM State House Building
Animal Refuge League	Hancock County Dispatch	RSU 23	SOM State Library
Army National Guard	Kennebunk Fire Dept	RSU 24	SOM State Police
Aroostook Medical Center (TAMC)	Kennebunk Police Dept	RSU 39	Somerset County Jail
Auburn School Department	Kennebunk Sewer District	RSU 5	SOPOSUP
Augusta Housing Authority	Kennebunk Town Hall	RSU 64	South Portland Housing Authority
Augusta School Dept	Lewiston School Department	RSU 71	South Portland School Dept.
Avesta Housing	Lisbon Police Dept	Scarborough Police Department	Southern Maine Agency on Aging
Bangor Housing Authority	Long Creek Youth Development	Scarborough Public Library	Southern Maine Community College
Bangor Police Dept.	Maine Coalition to End Domestic Violence	Scarborough Sanitary District	Southern Maine Finance Agency
Bangor Public Library	Maine College of Art	Scarborough School Department	St Josephs Rehab + Residence
Bath Housing Authority	Maine Fire Marshal Office	Social Security Administration	Sweetser
Bath Housing Development Corp	Maine International Trade Center	SOM Bureau of General Services	Thornton Academy
Belfast High School	Maine Municipal Bond Bank	SOM Bureau of Human Resources	Town of Arundel
Biddeford Police Department	Maine Real Estate Management LLC	SOM Bureau of Parks and Lands	Town of Brunswick
Blue Hill Public Library	Maine State Boards Association	SOM Bureau of Rehabilitation Services	Town of Bucksport
Brunswick and Topsham Water District	Maine State Housing Authority	SOM DAFS	Town of Durham
Brunswick Police Department	Maine Veterans Homes	SOM DAFS State Controller	Town of Falmouth
Brunswick School Dept	Mano Fin Mano	SOM Dept of Agriculture	Town of Freeport
Brunswick Sewer District	ME Academy of Natural Sciences	SOM Dept of Conservation	Town of Georgetown, ME
Cape Elizabeth School Dept	Mount Desert Police Dept	SOM Dept of Corrections	Town of Gorham
CASA	MSAD #15	SOM Dept of Education	Town of Kittery
Casco Bay Island Transit	MSAD #28	SOM Dept of Environmental Protection	Town of Newcastle
City of Biddeford	MSAD #51	SOM Dept of Human Services	Town of North Yarmouth
City of Ellsworth	MSAD #75	SOM Dept of Transportation	Town of Rockport, Maine
City of Old Town	MSP - Troop K	SOM Dept of Treasury	Town of Scarborough
City of Portland	Mt Blue Regional School Dist	SOM Finance Authority of Maine	Town of Standish
City of Presque Isle	Nature Conservancy	SOM Governors Office	Town of Windham
City of South Portland	Office of The District Attorney	SOM Inland Fisheries & Wildlife	University of Maine
City of Waterville	Portland Community Health Center	SOM Maine Dept of Labor	University of Maine At Orono
Community Health Options	Portland Housing Development Corporation	SOM Maine Dept of Public Safety	University of Maine System
Community Housing of Maine Inc	Portland Public Library	SOM Maine State Legislature	Westbrook School Department
County of Cumberland	Portland School Department	SOM Maine State Prison Corrections Service Center	Windham Correctional Center
Cumberland County Jail	Portland Water District	SOM Medical Use of Marijuana Program	Windham School Dept
Cumberland County Registry Of Deeds	Regional School Unit 13	SOM Public Utilities Comm.	Woodfords Family Services
Falmouth Memorial Library	RSU #3	SOM State Board Licensure/Medic ine	Yarmouth School Dept.
Falmouth School Dept - ME	RSU 1 - Bath		York County Community College
Foxcroft Academy	RSU 16		York County Sheriff's Office

MaineHousing

MaineHousing, the leading provider of affordable housing resources in Maine, purchased an existing two-story building at 26 Edison Drive to renovate into their new corporate offices after outgrowing their current location in downtown Augusta. COR was selected to work with Harriman and Landry/French to help transform the 65,000 sq ft into a more open, natural and collaborative space for their employees to work. The space consisted of open-office work spaces, conference rooms, interview rooms, boardroom, fitness/yoga room, and training room, cafeteria and collaborative spaces.

Location: Augusta, ME

Partners: Harriman Architecture, Landry/French Construction

Manufacturers: Herman Miller, DIRTT, National, Humanscale, Sit On It





Woodard & Curran

Woodard & Curran, an integrated science, engineering, design-build, and operations company was ready to relocate to a more modern space in downtown Portland. The new building was built with LEED Silver Standards and is approximately 56,000 square feet. In collaboration with Workplace Transformation Facilitation, Cunningham, and Cianbro, a new space was formed for Woodard & Curran with careful planning and thought towards the environmental impact of the project. The principles of the Circular Economy were applied while selecting products to design out waste and pollution, circulate products and materials, and regenerate nature. For COR, this meant identifying products that met environmental standards on carbon, circularity and chemistry with long-term warranties. The space included workstations, huddle rooms, conference rooms, and lounge areas.

Location: Portland, ME
Partners: Workplace Transformation Facilitation, Cunningham, Cianbro
Manufacturers: Herman Miller, DIRTT



QUALIFICATIONS

OFFICE FURNITURE, INSTALL AND COORDINATED DESIGN SERVICES

SUSTAINABILITY

COST PROPOSAL

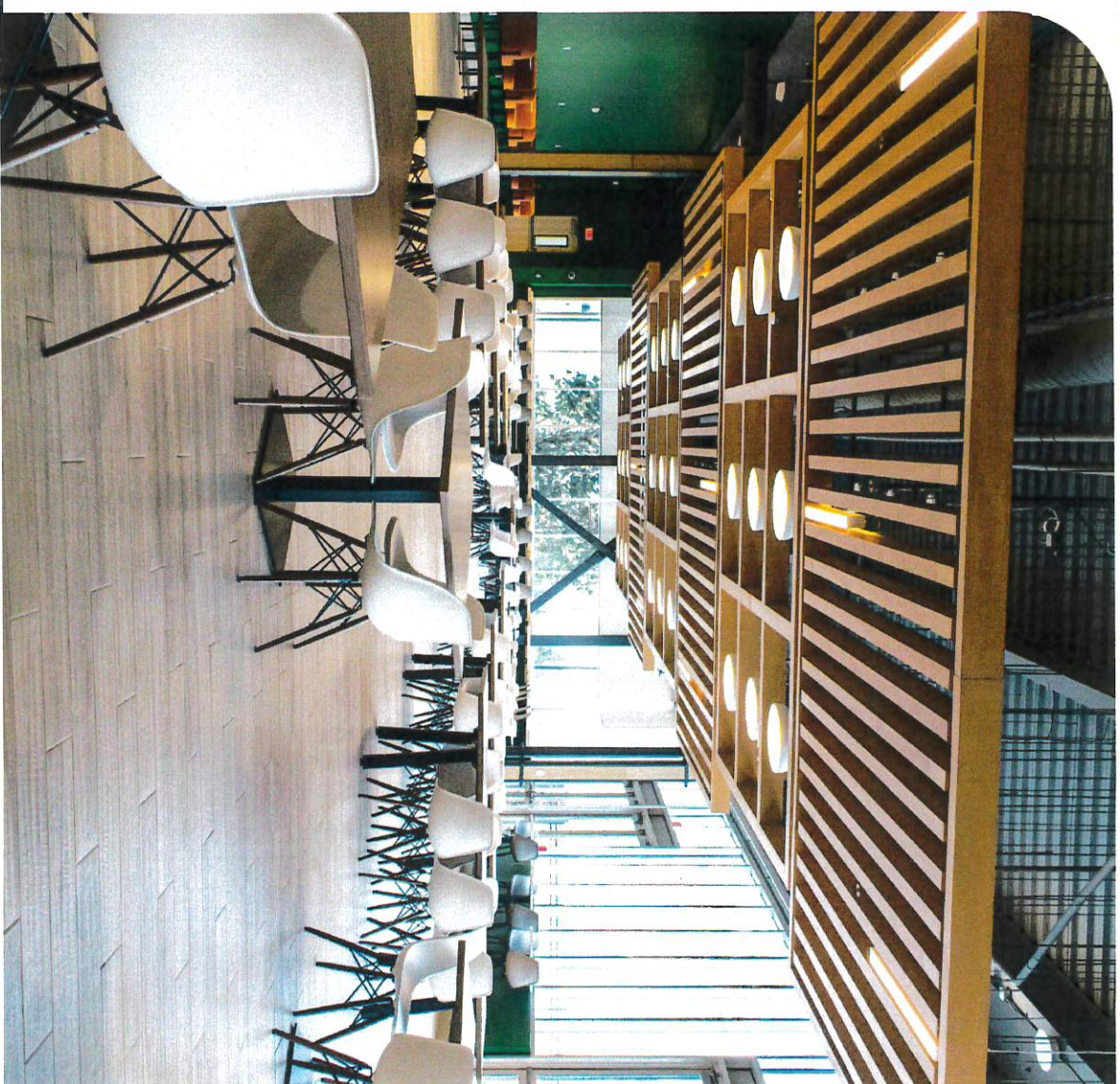
Confidential Retail Client

This confidential retail client wanted to create a new campus for their headquarters using an existing warehouse building previously used for manufacturing. With SMRT and Zachau Construction at the forefront of the project, Creative Office Resources worked closely with the project team to furnish the new 354,000 sq. ft. space. The project included workstations, custom executive offices, conference center, a boardroom, a health clinic, central dining with a full kitchen, state-of-the-art fitness facility, grab-n-go snack bars, and multiple break-out and touch down spaces. Throughout the building, the interiors and furniture tie in elements of the outdoors and the natural beauty of Maine. Prefabricated construction from DIRTT was also used throughout for space division, office spaces, and acoustical protection.

Location: Freeport, ME

Partners: SMRT, Zachau Construction

Manufacturers: Herman Miller, DIRTT, OFS, Humanscale, CCN, Geiger, Loftwall, Enwork, Created Hardwood, KI





Our Services

Creative Office Resources provides a range of services for our clients to support successful projects from concept to execution and beyond.

DESIGN

- Schematic Design
- Alternative RFP Solutions
- Tailored Product Applications
- Custom Product Modeling & Symbols
- Co-Creation & Solution Details
- Photo-Realistic Renderings
- Product/Kit of Parts Animations
- Fly Through Videos
- 360 Panorama/Virtual Reality
- Visioning Packages & Look Books

FURNITURE MAINTENANCE & MANAGEMENT

- Repair service and warranty work
- Short- and long-term inventory storage
- CAM (Client Asset Management)
- Chair demo program and full station mockups

PROJECT MANAGEMENT

- Schedule and critical path development
- Site surveys and evaluation
- Installation and delivery logistics
- Trade and inspection coordination
- Relocation and reconfiguration planning
- Nationwide installation management

WORKPLACE STRATEGY

- Ergonomic and well-being evaluations
- Buy-back program
- Furniture rentals
- Budgeting and estimating
- Financing
- Change management planning
- Reconfiguration, relocation and decommission

Our Process

PROJECT KICK-OFF	LISTEN & DISCOVER	SOLUTION DEVELOPMENT	ORDER PERFECTION	PROJECT LOGISTICS	PROJECT EXECUTION	DELIVERY & INSTALLATION	DAY 2 & BEYOND
<ul style="list-style-type: none"> • Introduce project teams • Clarify project goals and scope • Identify key checkpoints and develop milestone schedule 	<ul style="list-style-type: none"> • Define how user teams work • Clarify aesthetic preference • Create budget • Ideate solutions 	<ul style="list-style-type: none"> • Develop and refine typical • Coordinate power and data requirements • Populate floor plan • Finalize fabric and finish selection • Verify selections with visualization tools 	<ul style="list-style-type: none"> • Create final proposal and obtain sign off • Submit purchase order to vendors • Coordinate and develop install ready plans 	<ul style="list-style-type: none"> • Complete pre-install site visits • Develop a critical path for delivery and installation • Coordinate execution details with entire project team, including trades • Participate in construction meetings 	<ul style="list-style-type: none"> • Track manufacturing progress • Track project milestones • Schedule shipments and deliveries • Receive and inspect shipments 	<ul style="list-style-type: none"> • Manage all deliveries, installation, and furniture placement on site • Review ongoing punchlist daily to resolve any issues as soon as identified • Document installation progress • Continue coordination with other trades 	<ul style="list-style-type: none"> • Post project evaluation call • On-site ergonomic training • Service and warranty work • On-going support for additional needs and product reconfigurations

Design

OUR GOAL: Create well-designed spaces that shape culture, while meeting aesthetic, budgetary, and functional needs

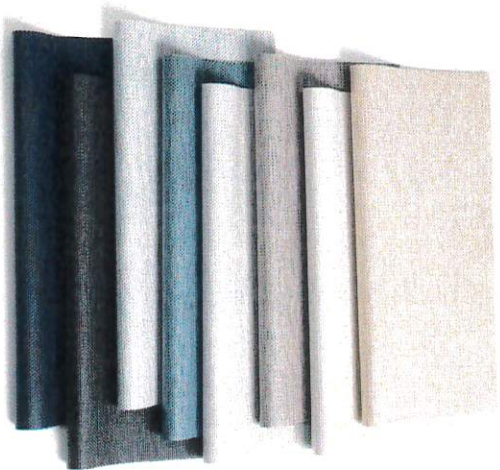
HOW WE DO IT: With our team of over 60 skilled designers, working alongside our in-house visualization team, COR Studio, and in collaboration with WSP, utilize strategic thinking, tactical expertise, and industry knowledge & trends to collaboratively enhance the efficiency of your space.

OUR DESIGN SERVICES AND DELIVERABLES:

- Space planning
- 2D & 3D drawings
- Photo-realistic renderings
- Fly-through videos
- Kit of parts animations
- Virtual reality
- Ancillary finish documents
- Furniture budget creation

BENEFITS: With COR, you will have access to a team of designers who speak furniture, including local designers that will attend meetings, site visits, and finish selections. We will work in collaboration with your selected A&E firm, WSP, to ensure they have the resources needed to complete this project, whether it's value-engineering, furniture symbols, finish samples, workplace research and more.

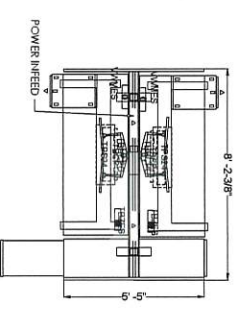
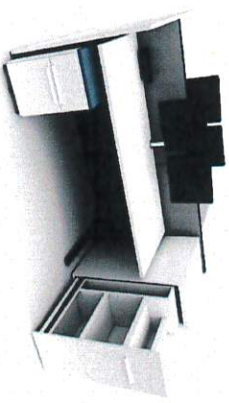
See next page for more on our Design Services >>



Swapportunities
Try these similar options from Herman Miller Group



- Venus Chairs
Herman Miller
Digitally Matched
- MultiGeneration by Knoll
Knoll
Digitally Matched



1 RENDERINGS

Top 300 Project: Sustainable Desk, 100% V200 (venom)
 118 Bright White
 Park 113 Jet Black
 WSP Creative by
 Herman Miller 100% 200
 Materials: 100% Recycled
 Fabric: Dark, Charcoal
 Size: 30x30

2 PLAN VIEW

POWER: 240 System
 2 Cables per User
 100% Power Efficiency (WSP Studio)
 Cable Management (Herman Miller)

LEGEND

Material: 2006 Dark Grey, 401 x 300 x 18W
 Laminates: 118 Bright White
 Lock: Chrome
 Castings: Power Module, Clamp Mount
 Frame: Steel

Material: 2006 Dark Grey
 Paper: 100% Recycled
 Laminates: 118 Jet Black
 Lock: Chrome
 Castings: Power Module, Clamp Mount
 Frame: Steel

COR Creative Resources



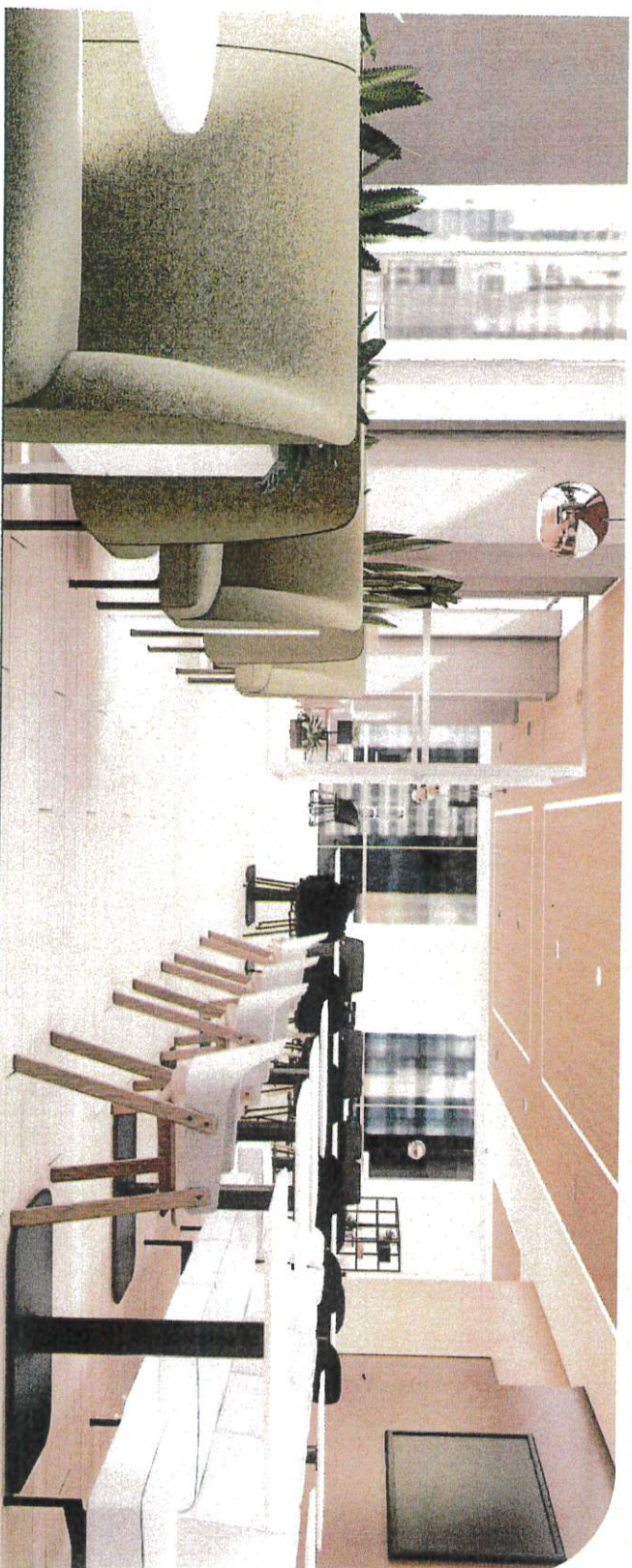
COR Studio

COR Studio is a consultative and strategic team within COR that focuses on discovery, strategy, co-creation, tailored solutions and visualization. We partner with clients and A&D during design development to foster solutions for unique space planning needs, supporting the vision and design intent.

Click the buttons below to watch how COR Studio helped two Maine clients visualize their potential spaces!

HANNAFORD

WOODARD & CURRAN



DESIGN APPROACH

STRATEGY & VISUALIZATION

- Schematic Design (Overall Floor Plate Planning & Strategy)
- Alternative RFP Solutions
- Tailored Product Applications (Customization & Blending)
- Custom Product Modeling & Symbols
- Co-Creation & Solution Details
- Photo-Realistic Renderings
- Product/Kit of Parts Animations
- Fly Through Videos
- 360 Panorama (Virtual Reality)
- Visioning Packages & Look Books

QUALIFICATIONS

OFFICE FURNITURE, INSTALL AND COORDINATED DESIGN SERVICES

SUSTAINABILITY

COST PROPOSAL

Project Management

OUR GOAL: Work with Cumberland County as not only a furniture vendor, but as a consultant to guide the overall project process utilizing our tried-and-true processes and systems

HOW WE DO IT: We work hand-in-hand with your project team to develop an overall critical path, all while closely monitoring the project scope, budget and schedule throughout the duration of the project. Our systems like CORE and The Bridge allow for seamless communication with the entire project team to ensure the project stays on track, every step of the way.

A GLANCE AT OUR PM SERVICES:

- Schedule/critical path development and management
- Site surveys and evaluation
- Installation and delivery logistics
- Trade and inspection coordination
- Relocation and reconfiguration planning and oversight
- Conduct walk throughs during and after installation

BENEFITS: Our PMs focus on identifying and resolving problems before they arise, reducing risk for Cumberland County. Our experience coordinating and working with other trades allows for us to seamlessly integrate furniture into the construction schedule with no delays or wasted time.

See next page for more on our Project Management >>

COR Creative Office Resources

141 Middle Street
Portland, ME 04101
Phone 207-775-7100
Fax 207-775-1003
www.creativeofficepavilion.com

Purchlist Ship To:

Order/Work Order:
Order Name:
Created:
Firmman:

Participants 207-619-9571

Salesperson

Purchlist Details

Purchlist Type:	PLANCHLIST
Product left on site:	No
Product returned to warehouse?	No
Highlighted plant?	No

Purch #1

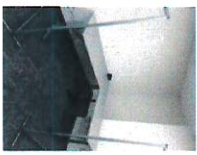

Associated with line: Line 10 - FL48735-00 - Effect electric table base, 24kg SILVER with 30" C-Feet

Quantity: 3

3 glides to the feet are broken and need to be replaced. 2 are in c/d rm. 1 in parlor rm all are marked with blue tape

Location: Above Shipping

Case:

COR Creative Office Resources Welcome, Miguel

WORK ORDERS ROUTE 4/27/2022

14243-13045-3	Comigt Construction - U-Maine	Scope: Remove existing furniture from 5 floors at 300 Fore St. Return all product to PSS; off load, inventory and palletize and store.	No Punch Delivery Ticket No Signature Labor Log Sent
Shop 1	LMW		
Install			
Job End Date	05/08/22	Customer PO: Signed Contract	

14324-13281-9	Comigt Construction Co, Inc	Scope: Delivery (2) News Stools	No Punch Delivery Ticket No Signature Labor Log Sent
Shop 2	15 Franklin St Portland, ME 04101	Punchlist: No Punch	
Delivery			
Customer PO:	Signed quote		

14442-131825	Haley Ward	Scope: Labor to deliver 3 chairs to Scoo	No Punch Delivery Ticket Signed Labor Log Sent
Shop 3	824 Main Street Saco, ME 04072	Punchlist: No Punch	
Delivery			
Customer PO:	Signed quote		

COR Creative Office Resources PROJECT STATUS SHEET - Order 175118

Customer: Cumberland County Jail
Order Date: 05/29/23
Ship To: Cumberland County Jail
Ship To Contact: VALERIE SIMON
Resources: Gina Baker
PO # / Vendor: P01 / Vendor **PO Description:** Ship To **ADD # / Add Date:** **PO Comments:** **Receipt Date:** **Est. Initial:** **Work Order # / Scheduled Initial:**

Customer	CUMBERLAND COUNTY JAIL	Order Date	05/29/23	Drawings	No Change Request
Ship To	356 County Way Portland, ME 04102	Order Type:	Drop Ship	Install Date #	No
Project Name		Project Manual	N/A	Open and Prep	
Customer PO		Customer PO	Signed quote	Ship to name company	
Ship To Contact	VALERIE SIMON simon@cumberlandcounty.jail	Salesperson:	Chris Baker	Order Name	

NO	PO # / Vendor	PO Description	Ship To	ADD # / Add Date	PO Comments	Receipt Date	Est. Initial	Work Order # / Scheduled Initial
N/A								
COR-LINE FROM								
47255	0627/023	(U) Framing Work Great Openings	Cumberland County Jail	322218 06/02/21				
47368	07/15/03	Per 72 WS Great Openings	Cumberland County	324001 07/11/21				
47257	06/01/23	(U) Electric table Wash - Extended Range - 240V rehabilitate C-Feet Wash, 24kg remove order # 1 USA A order	Cumberland County Hummelstein	PC00058328 06/15/23 PC00058328 06/02/23				

Account Manager: Gina Baker @ creativeoffresources.com
Phone: 207-619-9571
Client Services Coordinator: Sara Butcher
Email: gina_baker@creativeoffresources.com
Phone: 207-775-0452
Client Services Representative: Sam Bruch @ creativeoffresources.com
Email: sam_brauch@creativeoffresources.com



Project Coordination Sheet

General Information:

Client: _____ Project Name: _____
 Project Address: _____ Design Firm: _____
 Architectural Firm: _____ General Contractor: _____
 AV Contractor: _____ Cabling Contractor: _____
 Construction turnover date: _____ Client's scheduled move in date: _____
 Please describe the finishing requirements for furniture installation: _____

Building/Site Information:

Building requirements for delivery to building: Regular time _____ Overtime _____
 Building requirements for installation: Regular time _____ Overtime _____
 Building requirements for installation labor: Union _____ Non-union _____
 Will elevator be certified/available for installation: Yes _____ No _____
 If elevator operator required who carries cert? _____
 Elevator: Beight _____ Standard _____ N/A _____
 Elevator dimensions: Height _____ Width _____ Depth _____
 Elevator restrictions: _____
 Payment completion date? _____
 Insurance certificates required for building: Yes _____ No _____ If so, please supply an example copy to us.
 Background checks required for installers? Yes _____ No _____
 Contractor requires installers to attend construction site training? Yes _____ No _____ N/A _____

At COR, we understand that successful project coordination is like paving the road ahead. Our goal is to identify potential potholes in the journey so that we can proactively address them, ensuring a smooth and efficient process from start to finish.

To achieve this, we employ a comprehensive Project Coordination Sheet, meticulously tailored to each project's unique requirements. This sheet serves as our road map, guiding us through the intricate details that can often make or break a successful furniture installation.

See next page for more on our Project Management >>

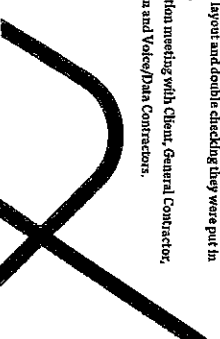
Workstation Power: From walls _____ Power poles _____ Floor coves _____ N/A _____
 Concluded outlets required? Yes _____ No _____ If yes, we will provide wiring options for your electrician to review.
 Fixed or bolt-down seating/bleed? Yes _____ No _____ If so, we would like to be a part of the conversation and will bring in any applicable Manufacturer's experts to consult.

Any non-standard power requirements for workstations? Please explain: _____
 Quantity and locations of copiers and printers: _____
 Voice/Data: Hardwired _____ Wireless _____ Both _____
 Type / quantity and location of TV and electrical required in conference table rooms: _____

Additional items we will be interested in and would follow up with at your new site:

- Site dimension verification
- Site evaluation for trailer truck deliveries
- Loading dock availability
- Thermostat / Light switch locations
- Sill heights
- Radiators size and location
- Overhanging counters
- Outlet locations
- Voice and data locations
- Floor Core locations - provide locations to coordinate with furniture layout and double checking they were put in correctly.
- Coordination meeting with Client, General Contractor, Electrician and Voice/Data Contractors.

COR / creativeofficesources.com
 NY / MA / ME / NJ / NH / CT / RI / VT



Order, Install & Delivery

OUR GOAL: Properly order, receive and install your product while reducing opportunity for error, damage, or delays to save time and money for Cumberland County and prepare the space for employees to move in.

HOW WE DO IT: Using our systems like CORE and the Bridge, our team will carefully enter orders, manage tracking and receiving, and schedule deliveries and installation.

COR employs our in-house team of installers, but will also use subcontractors when needed to supplement our team. To ensure the best value, quality, and result for Cumberland County, COR will send out a bid for pricing on installation and identify the option best suited for the project needs. COR takes into consideration cost, experience, location, and schedule when selecting a subcontractor. Any subcontractor selected will meet requirements of the Davis Bacon Act.

Additionally, our field management team will be on site throughout installation, working closely with our installation foreman, architects, contractors and other trades, coordinating the efforts of everyone involved to successfully manage the entire delivery and installation process.

BENEFITS: You can rest assured that our the products selected will be carefully reviewed and ordered, and that upon arrival, will be inspected to ensure they are in proper condition for installation. Cumberland County will be kept in communication throughout the order and installation phases and notified of any changes, delays, or problems that may arise.

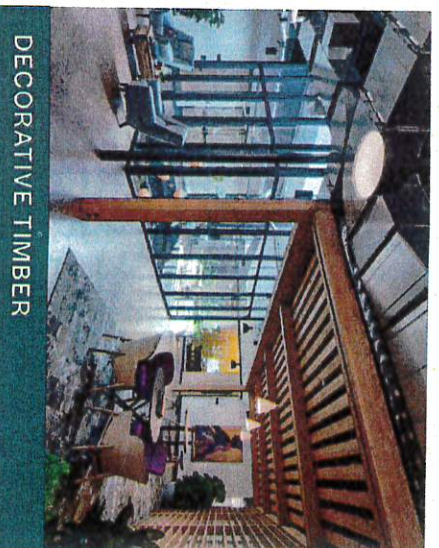
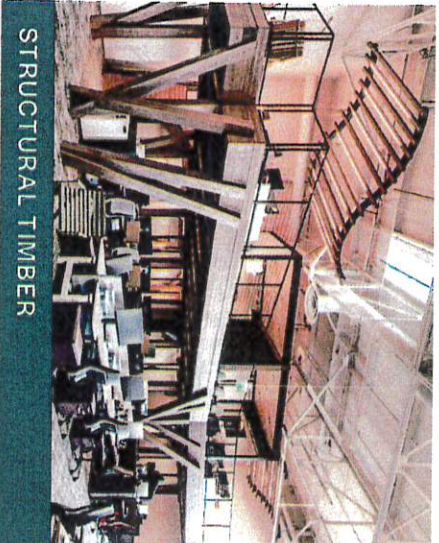
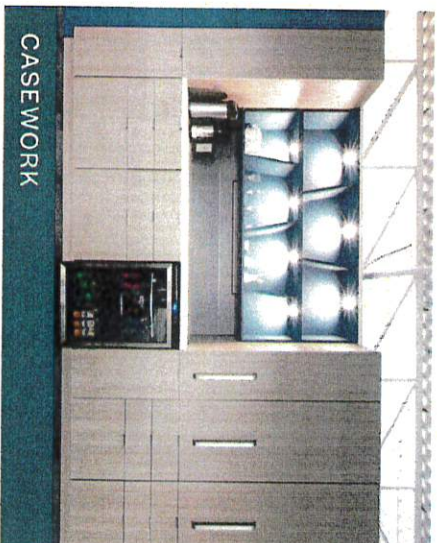
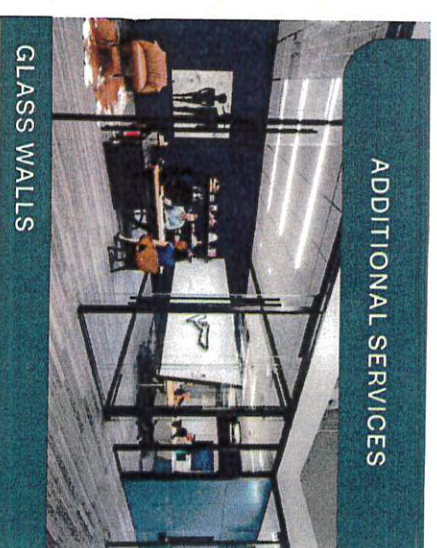
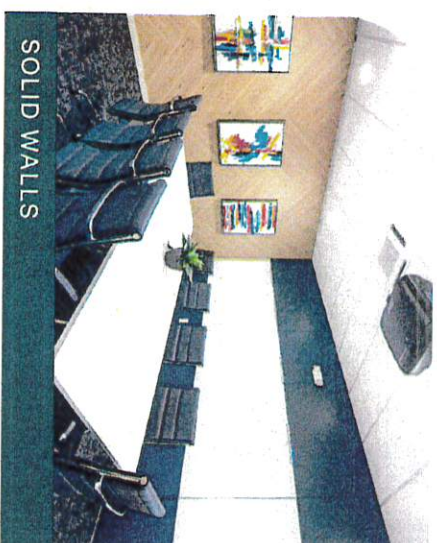


Interior Construction

We believe that prefabricated interior construction should play a crucial role in the design and development of built environments. To tailor our services to your unique project needs, we employ a diverse range of prefabricated construction systems that meet a variety of budgets, aesthetics, and functional requirements. These offerings form a key component of our commitment to delivering comprehensive workspace solutions across various industries.

BENEFITS

- **Broad Capabilities** – Glass walls, solid walls, casework, decorative and structural timber, and folding walls
- **Sustainability** – We can contribute to LEED or other certifications
- **Technology Integration** – Aesthetically cleaner, flexible for change
- **Speed** – Get your project completed faster (if a full DIRTT solution)
- **Tax Advantages** – 7 year depreciation verse 39 year (conventional construction) and bonus depreciation
- **Flexibility** – Easy and low-cost change in the future
- **Savings** – Lower operating expenses





Day 2 Services

Our relationship with Cumberland County doesn't end after installation.

We know the importance of supporting your employees in the transition of a new workspace, from product trainings to ergonomic tutorials. COR can help you welcome your team to the new space for a seamless experience.

As experts in the workplace, we know that change is happening constantly. Whether it's a growing team, a change in space function, or a stained seat cushion, we can provide storage, repairs/refurbishing, and reconfigurations. Your space should change with you!

DAY 2 SERVICES

- Employee Training
- Ergonomic Tutorials
- Reconfiguration
- Comprehensive Asset Management
- Warehousing
- Wood Touch-Up
- Repair/Refurbishing
- Maintenance
- Warranty Service
- Quick Ship Inventory
- Workplace Strategy Consultation
- Change Management



Inventory, Asset Management & Storage

At COR, our services go beyond move-in day. We know that your workspace is constantly evolving, whether it's a move, renovation, or reconfiguration. Our asset management and storage services ensure your furniture and assets are efficiently stored, tracked, and ready for whatever changes lie ahead. With our seamless solutions, you can focus on your business's growth while we take care of the rest.

With 300,000 square feet of warehouse space and CAM, our web-based software platform built specifically for furniture dealers, our clients can rely on us for reliable and safe storage while providing access and insights on your assets for improved utilization.

WAREHOUSE FEATURES

- 300,000 square feet
- State-of-the-art facility
- Climate controlled
- Secure
- Operated by staff of installation and product specialists

WAREHOUSE SERVICES

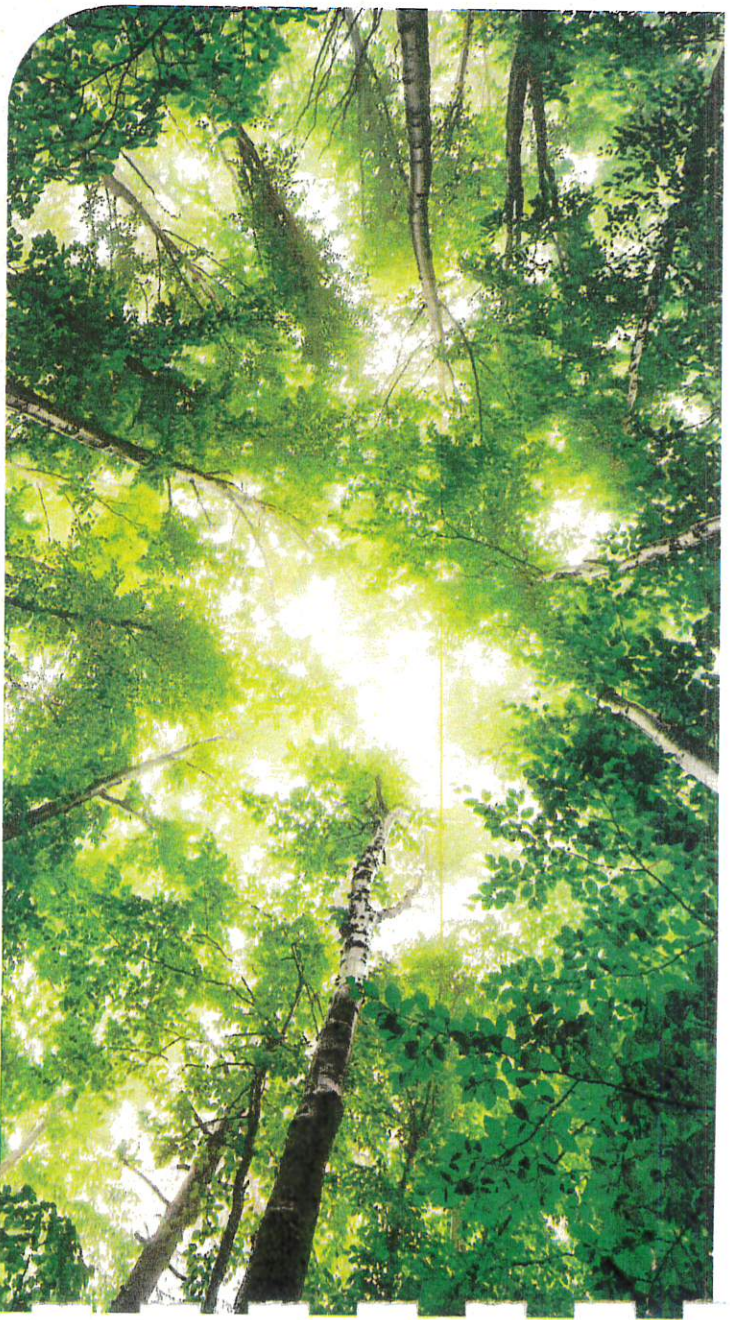
- Cleaning
- Delivery
- Refabrication and refinishing
- Repair
- Staging
- Storage



ADDITIONAL SERVICES

Our Commitment to the Environment

COR is dedicated to minimizing its environmental impact through a comprehensive approach to carbon footprint reduction. This includes implementing robust recycling programs, adopting energy efficiency initiatives, practicing sustainable fleet management, forging partnerships with manufacturers renowned for sustainable design, and collaborating with furniture donation and decommission organizations to promote circular economy practices.



RECYCLING PROGRAMS

COR places a strong emphasis on recycling, demonstrating a commitment to environmental responsibility. We recycle all cardboard, plastic, foam and small trash in a dedicated on site compactor. Our metal and aluminum is recycled, averaging over 90 metrics tons per year. All materials involving hazardous chemicals are recycled through Republic Services, helping protect the environment. We also prioritize pallet reuse to contribute to resource conservation, waste reduction, and overall environmental sustainability, and have a conscious approach to packaging by refraining from purchasing new boxes and instead reusing.

ENERGY EFFICIENCIES

COR warehouses and offices transitioned to all LED lighting including automatic shut-off to promote energy efficiency, reducing carbon emissions, minimizing waste, avoiding hazardous materials, and contributing to responsible lighting practices that benefit both the environment and society. Copiers, printers, and scanners are Energy Star rated and all employees are issued laptops, which are 90% more energy efficient.

FLEET MANAGEMENT

COR has 15 trucks that meet current EPA emissions standards, requiring the use of Diesel Exhaust Fluid (DEF). Our fuel company refuels our fleet on a weekly basis, aiming to minimize the number of vehicles on the road and reduce fuel exposure. We also enforces a strict anti-idling policy for our fleet, which minimizes unnecessary engine idling, contributing to reduced emissions and overall environmental impact.

MANUFACTURER PARTNERSHIPS

We partner with manufacturers who are leaders in sustainable design and guide our clients with product selections that are environmentally preferable and will assist with achieving product LEED certification. As a MillerKnoll certified dealer, we see first hand how MillerKnoll works with global partners and brands to reduce their carbon footprint, design out waste, and source better materials. We support MillerKnoll in their efforts to help improve the health of our planet and communities.

DONATION COLLABORATIONS

We collaborate with organizations like The Furniture Trust, ANEW, Material for the Arts and more that demonstrate social and environmental responsibility by offering services that decommission, recycle and donate used furniture. By reinventing the liquidation process, these organizations avoid landfill and bring furniture back into their communities supporting non-profits, public agencies and under served communities.

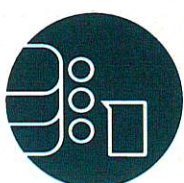
Vision for a Better World

As MillerKnoll looks to the future, their passion for good continues to drive the decisions they make as a company. In their Better World report, they share data and details from initiatives across MillerKnoll's environmental, social, and governance (ESG) focus areas.



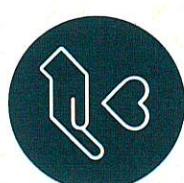
DOING MORE FOR OUR PLANET:

MillerKnoll sharpened their goals around carbon emissions, the smart use of resources, and eco-inspired design, and they've engaged the community of suppliers and associates in their sustainable practices.



ENSURING ALL PEOPLE CAN THRIVE:

MillerKnoll embraces policies, practices, and programs that advance a more equitable and diverse workplace and industry, and that create spaces where all people feel seen, and all perspectives are heard.



DESIGNING A BRIGHTER FUTURE:

MillerKnoll's community impact and global philanthropy focuses on their diversity, equity, inclusion, and belonging (DEIB) ecosystem. They deliver impact through grantmaking, volunteerism, and collaborations that align with their purpose and values.

2022 ESG Highlights

40%
reduction in packaging waste at 14 of their global contract facilities

14
global brands engaged across 9 days for their 2022 Days of Understanding

\$450M
directed to spend with diverse suppliers from FY 2021-2023

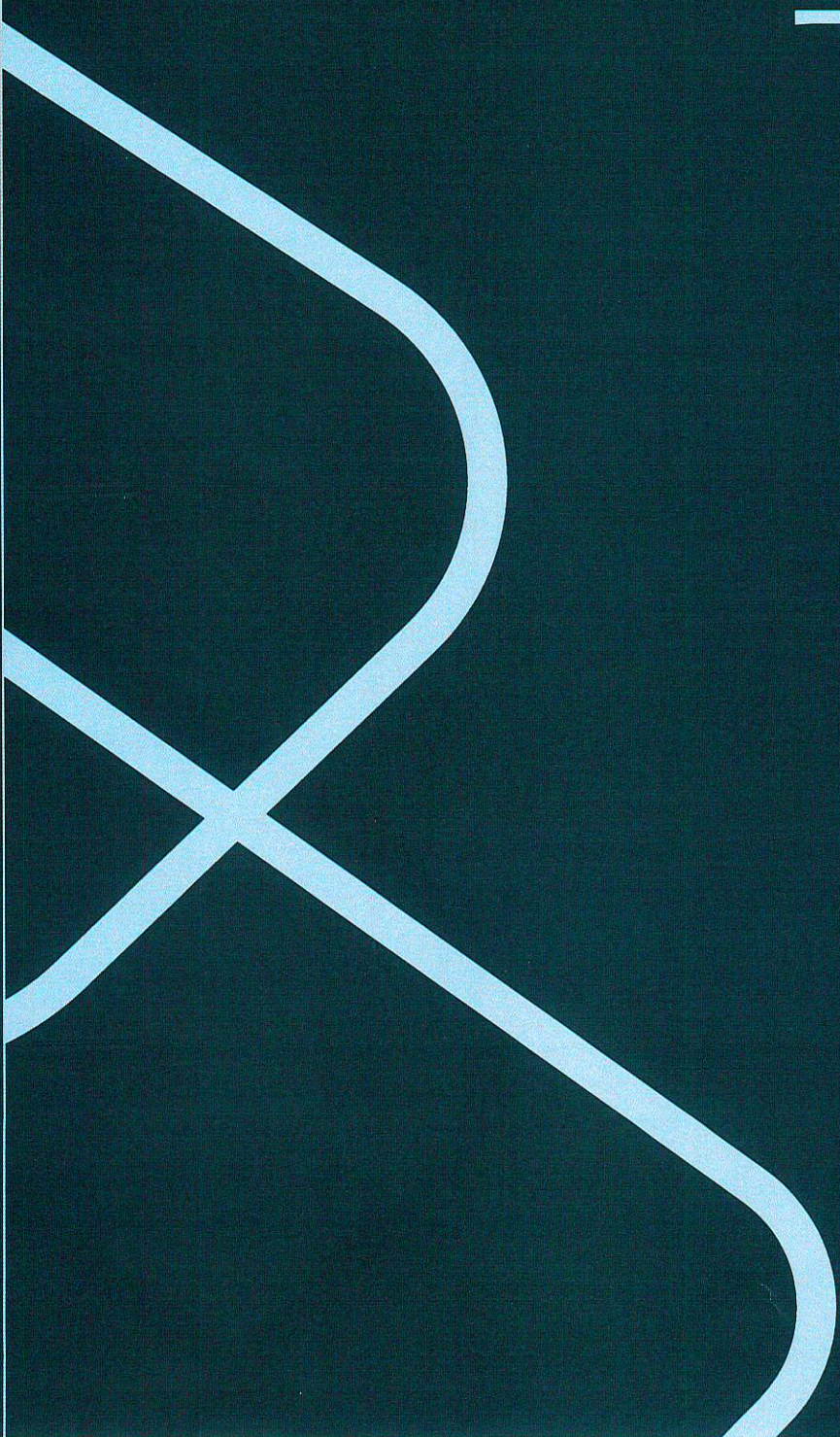
22,000
associate volunteer hours annually

\$2.4M+
Philanthropic commitment to MillerKnoll communities

100%
brand and community participation in Global Day of Purpose

Cost Proposal

Discounts & Price Lists
Our Solutions
Preliminary Budget
Terms & Conditions
Warranty
Bid Forms



Discounts & Price Lists

DISCOUNTS

For Cumberland County, COR will utilize two contracts, the State of Maine Contract and OMNLA, which are available to all non-profits and municipalities. It's important to note that the discount levels for each contract are dependent on the products being specified. We are very familiar with both of these contracts and the products available through them so we can provide insight and advice throughout the furniture specification process to select products that fit all needs and provide the best value.

The next two pages go into further detail about each contract and how it works.

PRICE LISTS

Our manufacturers provide price lists/books that can be accessed and downloaded online. Please note, **all pricing shown is List Price** and do not reflect discounting that Cumberland County would receive.

Click the manufacturer names to view their price lists.

[Herman Miller](#)

[SitOnIt](#)

[Humanscale](#)

*Additional price lists available upon request.



State of Maine Contract

WHAT IT MEANS:

- The bidding has already been done by the Bureau of Purchases, saving time and money by utilizing the process already completed.
- The contract is based on maximum volume, so the same discounting applies to one chair, or 300.
- This contract is re-evaluated every 3 years.
- These products not only meet ANSI/BIFMA industry standards but many have gone through the University of Maine test lab, ensuring quality and durability.

WHO CAN ACCESS IT:

- Municipalities, School Districts, Non-Profits and Public Universities can access at the deepest pricing levels whether buying one item or outfitting an entire building.
- Over 100 municipalities and countless State of Maine departments have taken advantage of this agreement over the past 30+ years.

WHAT WE PROVIDE:

- Competitive pricing on high quality and durable products
- Comprehensive product offering
- In-house services to support before and after the sale needs:
 - Space Planning and Design
 - Project Management
 - Delivery and Installation
 - Post Sale Support
- The best warranties on products

WHAT'S AVAILABLE:

- Workstations
- Filing & Storage
- Tables
- Seating
 - Herman Miller
 - Sit On It
 - AllSeating



OMNIA Partners

WHAT IT MEANS:

- OMNIA Partners is the largest cooperative purchasing organization for the public sector in the U.S.
- It aims to provide cost savings for products and services, along with reducing administrative costs associated with competitive bids.
- OMNIA Partners connects thousands of public agencies and educational institutions with hundreds of supplier partners for combined purchasing power.
- Discounts are tiered and based on selected products and quantities.

WHO CAN ACCESS IT:

- States and State Agencies
- Cities, Counties and Municipalities
- Public/Private Primary Education Institutions
- Public/Private Higher Education Institutions
- Nonprofits and Charitable Organizations
- and Special Districts

BENEFITS:

Cost Savings

- Through economies of scale, our cooperative contracts offer hard cost savings by leveraging the purchasing power of public agencies across the country. This results in better pricing for you!

Time Savings

- Understanding your teams are often understaffed and overburdened, we act as resources to create a faster, simpler process.

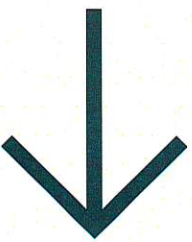
- We streamline for efficiency, freeing you up to focus on other important initiatives

Option to piggyback off the resulting award without spending the time to go out for solicitation yourself

Best Value

- We know your teams have standards that must be upheld and considered when making purchasing decisions. The OMNIA contract has been competitively solicited and publicly awarded by a lead agency – a thorough RFP Process and awarded for best value.
- There is no cost to participate
- Increased buying power

Three Key Points



TO KNOW BEFORE YOU REVIEW OUR SOLUTIONS

WHAT WE CREATED

- Diverse layouts for workstations, private offices, and ancillary furniture in both Conventional and Mixed Styles
- The 3rd Floor of 27 Northport Drive was used as the sample floor plan of what your space could look like.
- These plans were generated as a foundational step for pricing considerations.
- Layout and furniture options can be tailored to meet your specific needs, desired aesthetic, and project budget.

HOW WE DID IT

- We collaborated with COR Studio, our in-house visualization team, to craft layouts that showcase our breadth of product and ability to value engineer based on different requirements
- Utilized the physical space of the 3rd Floor at 27 Northport Drive to present a tangible demonstration of space utilization based on distinct work styles and functional requirements.
- While our proposal may not be an exact fit for Cumberland County, the exercise serves the purpose of illustrating pricing and layout manipulations.

HOW WE PRICED IT

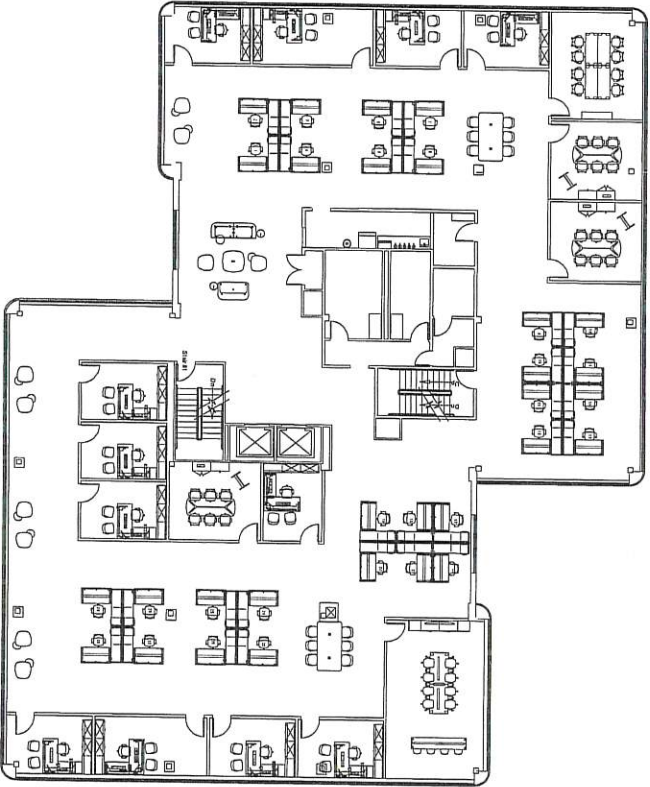
- We priced the entire floor, as well as per workstation, per office, and per conference room.
- We provided Good, Better, and Best options within the State of Maine and OMNIA Partner Contracts.
- Good, Better, and Best Options maintain consistent style and function, differing primarily in product selection.
- 3rd Floor pricing can be extrapolated for an approximate full project cost (multiplied by 3), with the caveat that costs for other floors will vary if layouts and functions deviate from the 3rd Floor example, which we expect to be the case.

Conventional Layout

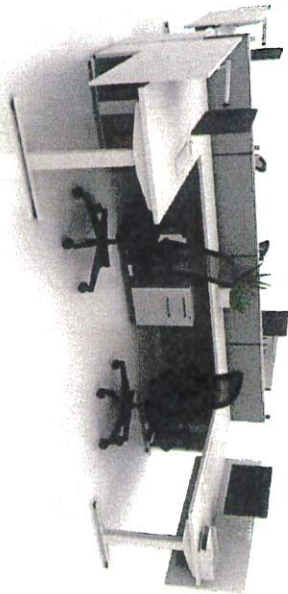
WHAT IS CONVENTIONAL?

Most workers are focused on similar tasks completed at assigned individual workpoints. Assumes all assigned desks, no flex stations, larger offices and workstations, and fewer group spaces, mostly meeting rooms.

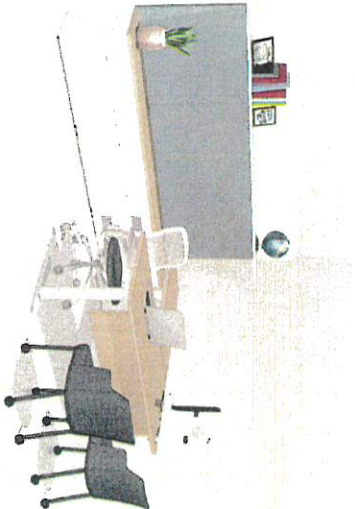
OVERALL PLAN



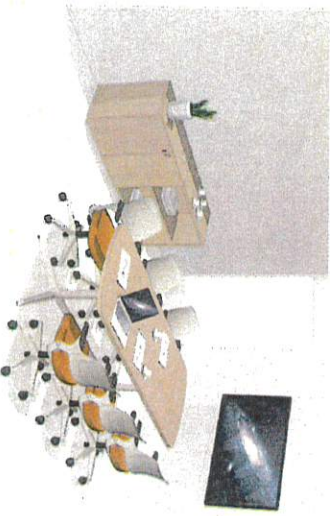
TYPICAL WORKSTATION



TYPICAL PRIVATE OFFICE



TYPICAL CONFERENCE ROOM



GOOD

Full Furniture Purchase	\$179,648.00	Price Per Workstation	\$2,260.00
Installation Estimate	\$36,000	Price Per Office	\$4,725.00
*INSTALLATION ESTIMATE IS 20% OF FURNITURE PURCHASE			
Price Per Conference Room	\$5,259.00	*PRICING INCLUDES TASK & CONFERENCE SEATING	

BETTER

Full Furniture Purchase	\$212,760.00	Price Per Workstation	\$2,715.00
Installation Estimate	\$42,500	Price Per Office	\$5,932.00
*INSTALLATION ESTIMATE IS 20% OF FURNITURE PURCHASE			
Price Per Conference Room	\$7,051.00	*PRICING INCLUDES TASK & CONFERENCE SEATING	

BEST

Full Furniture Purchase	\$244,702.00	Price Per Workstation	\$2,800.00
Installation Estimate	\$49,000	Price Per Office	\$7,362.00
*INSTALLATION ESTIMATE IS 20% OF FURNITURE PURCHASE			
Price Per Conference Room	\$8,148.00	*PRICING INCLUDES TASK & CONFERENCE SEATING	

This is not a quote. This proposal is an estimate of potential layouts. Additional work and discussions are necessary to provide exact numbers.



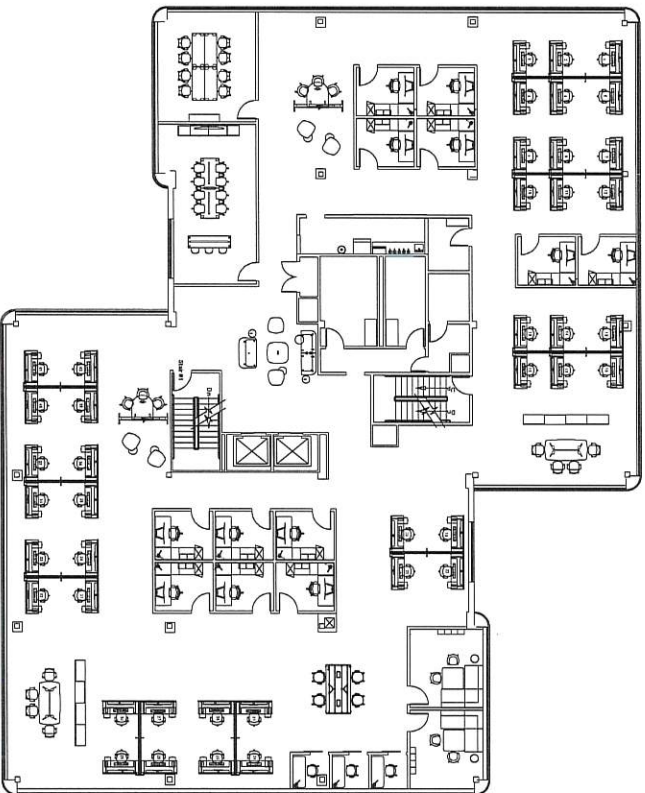
FLOOR 3

Mixed Layout

WHAT IS MIXED?

Several workers complete a variety of tasks across a mix of assigned and shared settings. Assumes fewer and smaller offices, smaller workstations, and more group spaces with greater variety.

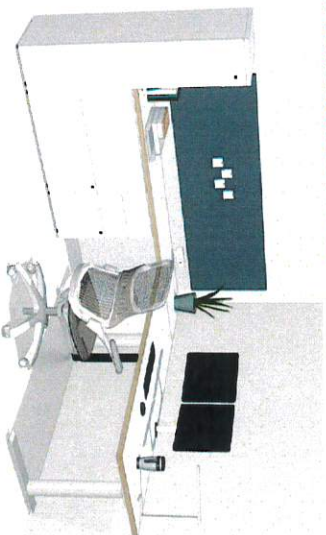
OVERALL PLAN



TYPICAL WORKSTATION



TYPICAL PRIVATE OFFICE



TYPICAL CONFERENCE ROOM



GOOD

Full Furniture Purchase	\$213,030.00	Price Per Workstation	\$2,610.00
Installation Estimate	\$42,600	Price Per Office	\$3,324.00
*INSTALLATION ESTIMATE IS 20% OF FURNITURE PURCHASE		Price Per Conference Room	\$5,757.00
		*PRICING INCLUDES TASK & CONFERENCE SEATING	

BETTER

Full Furniture Purchase	\$257,984.00	Price Per Workstation	\$3,240.00
Installation Estimate	\$51,600	Price Per Office	\$4,125.00
*INSTALLATION ESTIMATE IS 20% OF FURNITURE PURCHASE		Price Per Conference Room	\$6,259.00
		*PRICING INCLUDES TASK & CONFERENCE SEATING	

BEST

Full Furniture Purchase	\$303,718.00	Price Per Workstation	\$3,695.00
Installation Estimate	\$60,750	Price Per Office	\$4,736.00
*INSTALLATION ESTIMATE IS 20% OF FURNITURE PURCHASE		Price Per Conference Room	\$8,347.00
		*PRICING INCLUDES TASK & CONFERENCE SEATING	

This is not a quote. This proposal is an estimate of potential layouts. Additional work and discussions are necessary to provide exact numbers.

QUALIFICATIONS

OFFICE FURNITURE, INSTALL AND COORDINATED DESIGN SERVICES

SUSTAINABILITY

COST PROPOSAL



Preliminary Budget

In an effort to provide a tangible budget, we have taken the two floorplate typicals shown on the previous pages and extrapolated the estimated cost to create a budget by multiplying the single floor cost estimates by three.

On the right, you will see the two layout scenarios seen on the previous pages as Good, Better, and Best pricing for the full 3 floor building.

We want to emphasize that this is not meant to be the final layout, specifications, or budget for the Cumberland County project. Upon award, we will begin our process with Cumberland County and WSP to understand project goals, budget, and style to create a customized plan, schedule, and budget.

Conventional

GOOD

Full Building Furniture Purchase
\$538,944.00
 Installation Estimate
\$108,000
*INSTALLATION ESTIMATE IS 20% OF FURNITURE PURCHASE

BETTER

Full Building Furniture Purchase
\$638,280.00
 Installation Estimate
\$127,500.00
*INSTALLATION ESTIMATE IS 20% OF FURNITURE PURCHASE

BEST

Full Building Furniture Purchase
\$734,106.00
 Installation Estimate
\$247,000
*INSTALLATION ESTIMATE IS 20% OF FURNITURE PURCHASE

Mixed

GOOD

Full Building Furniture Purchase
\$636,090.00
 Installation Estimate
\$127,800.00
*INSTALLATION ESTIMATE IS 20% OF FURNITURE PURCHASE

BETTER

Full Building Furniture Purchase
\$773,952.00
 Installation Estimate
\$154,800.00
*INSTALLATION ESTIMATE IS 20% OF FURNITURE PURCHASE

BEST

Full Building Furniture Purchase
\$911,154.00
 Installation Estimate
\$182,250.00
*INSTALLATION ESTIMATE IS 20% OF FURNITURE PURCHASE

PRICING CONTINGENCIES:

- 50% Deposit is required
- Pricing is valid for 30 days after proposal submittal.
- Prices shown are current, based on manufacturer's prevailing price list at the time of order entry. Prices may be subject to change on subsequent orders. Prices offered include a 3% discount if payment is by check, wire or ACH transfer.
- New product design services include (1) plan, (1) revision and installation drawings. Additional design services will be quoted on an hourly basis.
- Change order fees are based on Creative Office Resources' Purchase and Sale Agreement.
- Product order changes cannot be made to an order without written documentation from the client to COR.

SURCHARGES: Following notice from Seller, Buyer shall pay to Seller a surcharge in the event of any extraordinary, emergency or other unusual or unexpected increases in the cost of manufacturing, supplying or distributing Products [including, without limitation, tariffs, complying with governmental laws and regulations, energy/fuel charges]. Such surcharges are intended to cover temporary increases in costs driven by extraordinary, emergency, unusual or unexpected events faced by Seller and may be applied generally across all Products.

INSTALLATION TERMS AND CONDITIONS:

1. This quote is based on one time non-union delivery direct to site and a one phase non-union installation unless otherwise noted in the body of the quote. If additional deliveries, phases or rerouting of the product to our warehouse is requested or required, there may be additional charges. If additional charges are incurred, COR will provide a quote for these changes to scope.
2. Installation assumes exclusive access to loading dock, freight elevator and receiving area on the floor being installed. Additional charges will be assessed for installations requiring product to be carried up stairs.
3. Product will be quoted to ship to a subcontractor or a Creative Office Resources warehouse and redelivered, or to ship direct from manufacturer to site. If direct shipment is required to be redirected to a COR or subcontractor warehouse, additional handling and storage charges will be assessed.
4. The area being installed must be clear and ready for furniture installation (i.e. any construction completed, any carpeting work completed, existing furniture removed). The furniture installation area will be cleaned and the floor vacuumed before the job is completed. All trash will be removed by Creative Office Resources.
5. Before product is brought into the space, a walk-through will be conducted by the installation foreman and the client contract to note any existing building damages or conditions.
6. All product will be installed per plan. Any minor modifications required by customer may be made at the installation foreman's discretion. Any substantive changes will require completion of a Change Order, and may include additional labor and/or product charges. Additional charges will be requested and a purchase order modification or new purchase order may be required before work can be completed.
7. The installation foreman will conduct a walk-through with the client contact to develop a "punchlist" of incomplete items. Punchlist items include missing, damaged, or incorrect products that cannot be installed per the approved plan. Product additions or request changes should be noted on a separate "Day 2 request" The job is complete if all product is installed per the approved plan.
8. Creative Office Resources is not responsible for providing an electrician to hardwire any electrical power component to the building power supply. This must be done by the owner's electrician.
9. Creative Office Resources is not responsible for running any telephone and/or computer wiring through the furniture being supplied nor for supplying data jacks for the Data terminations in the furniture being supplied.
10. Creative Office Resources will work in conjunction with the telephone/computer cabling contractors. However, once the furniture installation is complete, all purchased furniture items will be moved into their final position. If the furniture cannot be moved into final position due to incomplete cabling or electrical work, moving the furniture after that work is complete becomes the owner's responsibility.
11. Many town and city regulations require a licensed electrician to perform electrical connections and snap in electrical outlets. If your town or city requires this, there will be additional charges incurred. These charges cover the cost of the permit and the installation. The cost to perform this work varies depending on the town or city the work is being performed in. The client will be responsible for these charges. A quote will be presented to the client and signed approval will be required before the work can be done.
12. Creative Office Resources shall not be considered in default of any of its obligations under this Agreement to the extent that the performance thereof is delayed or rendered impossible by acts of God, war, civil commotion, fire, storm, flood, explosion, strikes, walkouts, other industrial disturbances, or any other cause which is beyond its reasonable control.

PROJECTS INCLUDING FRAMERY PRODUCTS: This product may be considered movable furniture instead of building structures that sprinkler requirements are typically set for. This determination must be made by your local inspectors. Framery products can be fitted with sprinklers if required because of local regulations. Framery and Creative Office Resources do not provide sprinklers, install them or take responsibility for the installation. Framery's products can be plugged into a wall socket. Building hardware connection is available upon client request prior to order.

We've Got You Covered

When you choose a MillerKnoll brand, you're not just buying quality products. You're investing in a relationship and the peace of mind that our commitment to you extends well beyond the moment that your product leaves the factory. While the length of our warranty terms varies by brand and by product, our dedication to your satisfaction is unwavering.



You can find detailed warranty information for MillerKnoll's collective of brands, including any exclusions that may apply, through the links below.

<u>Herman Miller</u> : Up to 12 years	<u>HAY</u> : Up to 5 years
<u>Knoll</u> : Up to lifetime	<u>HOLLYHUNT</u> : 1 year
<u>Colebrook Bosson Saunders</u> : Lifetime warranty	<u>KnollTextiles</u> : 1 year
<u>DatesWeiser</u> : 5 years	<u>Maharam</u> : Style specific
<u>Design Within Reach</u> : 3 years	<u>Muntz</u> : Up to 10 years
<u>Edelman</u> : 1 year	<u>NaughtOne</u> : 10 years
<u>Geiger</u> : Up to 12 years	<u>Spinnerbeck FilzFelt</u> : 1 year



CO2 Creative Office Resources

Cumberland County

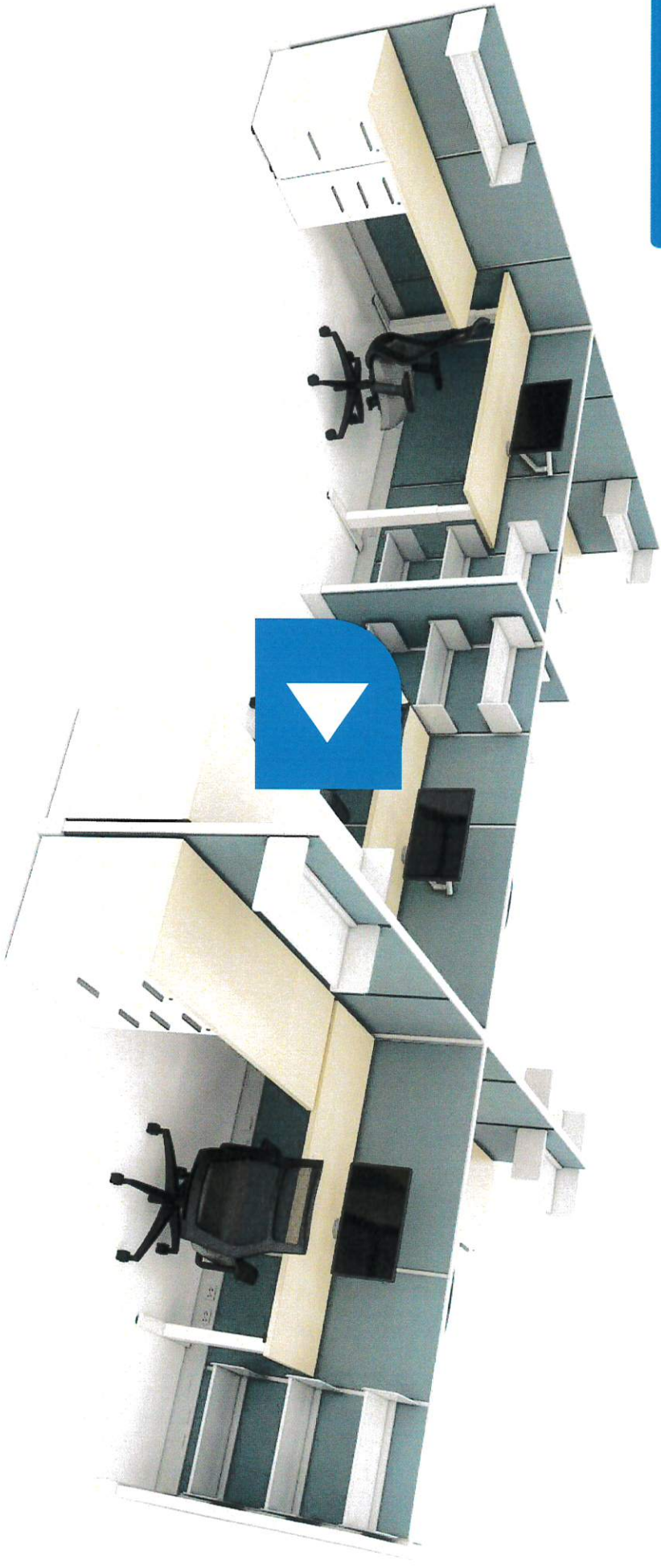
8x8 Workstation Pricing

FEBRUARY 1, 2024



Typical Animation

Click here or the image to watch an animation of three typical options with details and pricing.



VIEWING A PRINTED COPY?
SCAN THIS QR CODE TO
WATCH ON YOUR PHONE.

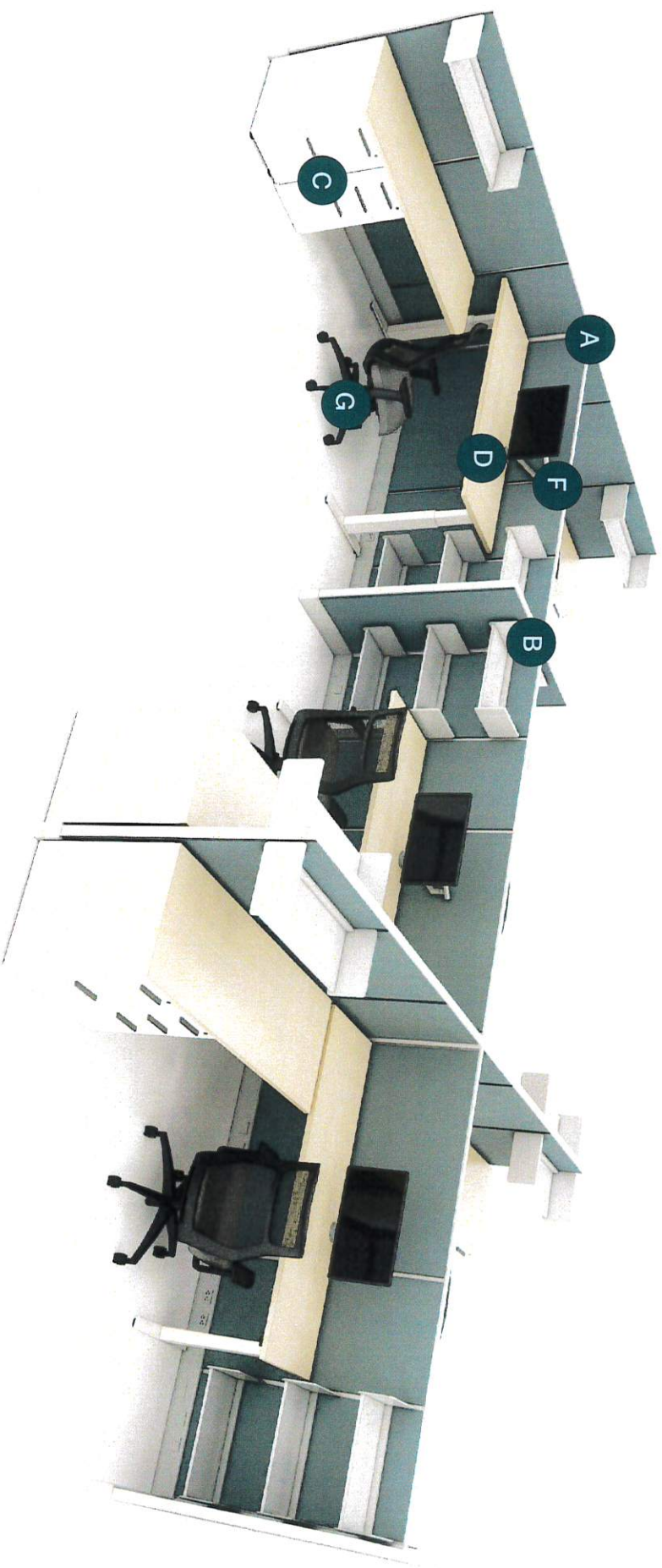


CO2

Good

8' X 8' WORKSTATION TYPICAL

- A. 53" H overall panel height
- B. 9' storage shelving
- C. Freestanding box/box/file and file/file pedestals
- D. Electric height adjustable tables
- E. Power with 4 receptacles under height adjustable table (not visible in rendering)
- F. Ergonomic monitor arms
- G. 6-way ergonomic task chair with adjustable arms and sliding seat pan



PRICING

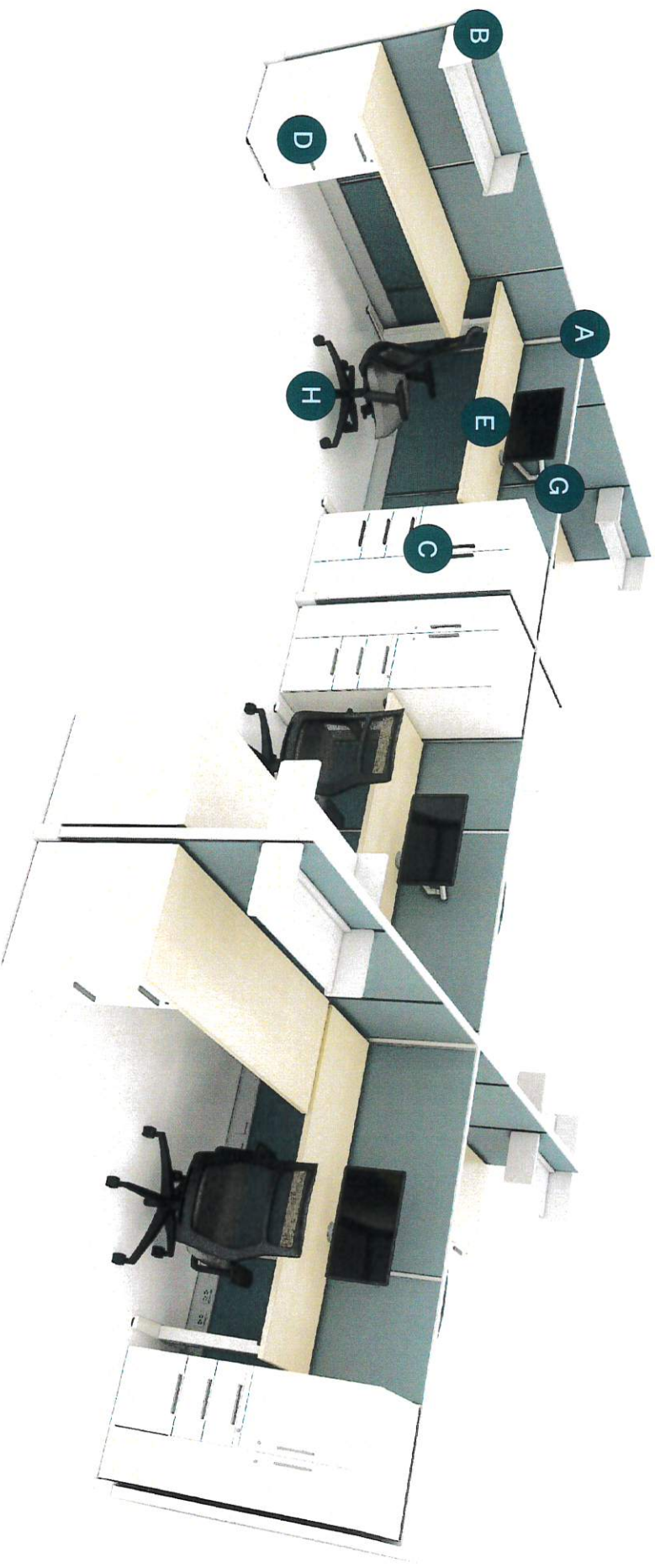
Workstation Total, 6-Pack (As Shown)	Per Station \$2,856.00
Seating Total, 6-Pack	Per Chair \$298.00
	\$1,788.00

CO3

Better

8' X 8' WORKSTATION TYPICAL

- A. 53" H overall panel height
- B. 3' storage shelving
- C. 52" storage tower with coat rod, binder storage with adjustable shelf and integrated box/box/file
- D. Freestanding file/file pedestal
- E. Electric height adjustable tables
- F. Power with 4 receptacles under height adjustable table (not visible in rendering)
- G. Ergonomic monitor arms
- H. 6-way ergonomic task chair with adjustable arms and sliding seat pan



PRICING

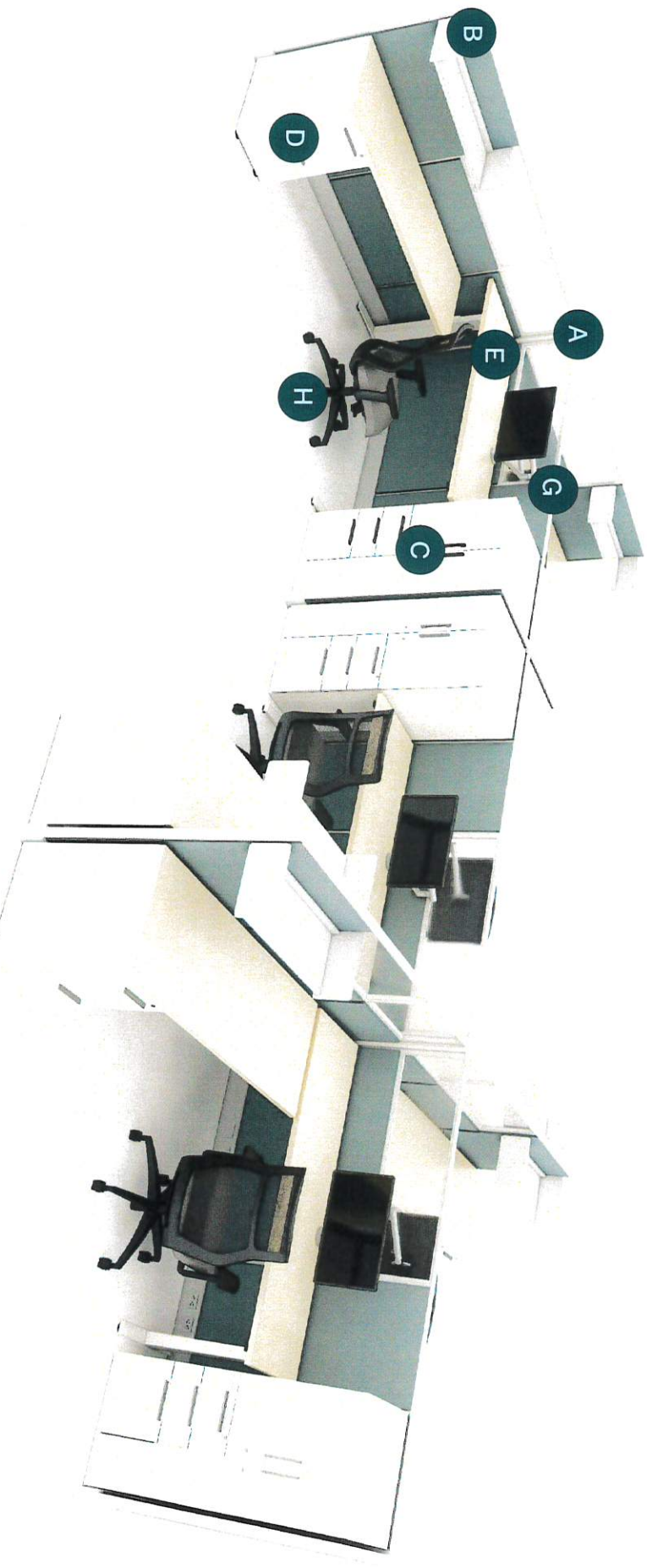
Workstation Total, 6-Pack (As Shown)	Per Station \$3,353.00
Seating Total, 6-Pack	Per Chair \$298.00
	\$1,788.00

CO2

Best

8' X 8' WORKSTATION TYPICAL

- A. 53" H overall panel height with 14" glass
- B. 3' storage shelving
- C. 52" storage tower with coat rod, binder storage with adjustable shelf and integrated box/box/file
- D. Freestanding file/file
- E. Electric height adjustable tables
- F. Power with 4 receptacles under height adjustable table (not visible in rendering)
- G. Ergonomic monitor arms
- H. 6-way ergonomic task chair with adjustable arms and sliding seat pan



PRICING

Workstation Total, 6-Pack (As Shown)	Per Station \$3,978.00
Seating Total, 6-Pack	Per Chair \$298.00
	\$1,788.00

COR Creative Office Resources

Thank You.

For any questions, please contact
Pete.Chaput@creativeofficeresources.com

