



## DEPARTMENT OBJECTIVES

- Provide a safe and positive experience while visiting the County properties and leave a lasting first impression.
- Provide suitable workplaces for all County employees that adheres to all specialize needs for the individuals (This includes our State employee tenants who occupy the Courthouse).
- Maintain existing buildings and infrastructure while staying within budget constraints.
- Maintain County Fleet vehicles to ensure safe operation by our Sheriff's Office employees and other staff members.



## FACILITY DIVISIONS

### MAINTENANCE

- RESPONSIBLE FOR ALL MAINTENANCE, HVAC REPAIR, PLUMBING, PAINTING, AND CARPENTRY IN THE BUILDINGS AND PARKING GARAGE.
- RESPONSIBLE FOR SNOW REMOVAL OPERATIONS IN THE WINTER AND GROUNDS BEAUTIFICATION IN THE SUMMER WITH THE HELP OF OUR CUSTODIAL STAFF.
- CURRENTLY HAVE 11 FULL TIME MAINTENANCE PERSONNEL SCATTERED THROUGHOUT COUNTY OPERATIONS.

### CUSTODIAL SERVICES

- RESPONSIBLE FOR THE CARE AND CLEANLINESS OF COUNTY OWNED AND OCCUPIED LOCATIONS.
- ITEMS INCLUDE GENERAL CLEANING AND DISINFECTING OF OFFICES, RESTROOMS, COURTROOMS, AND COMMON SPACES. THIS ALSO INCLUDE THE UPKEEP OF BI-ANNUAL FLOOR FINISHING WHERE APPLICABLE.
- CURRENTLY HAVE 8 FULL TIME CUSTODIANS WHO SHARE THE CLEANING OPERATIONS AND ARE SCATTERED THROUGHOUT THEIR DESIGNATED LOCATIONS.

3

## FACILITY DIVISIONS

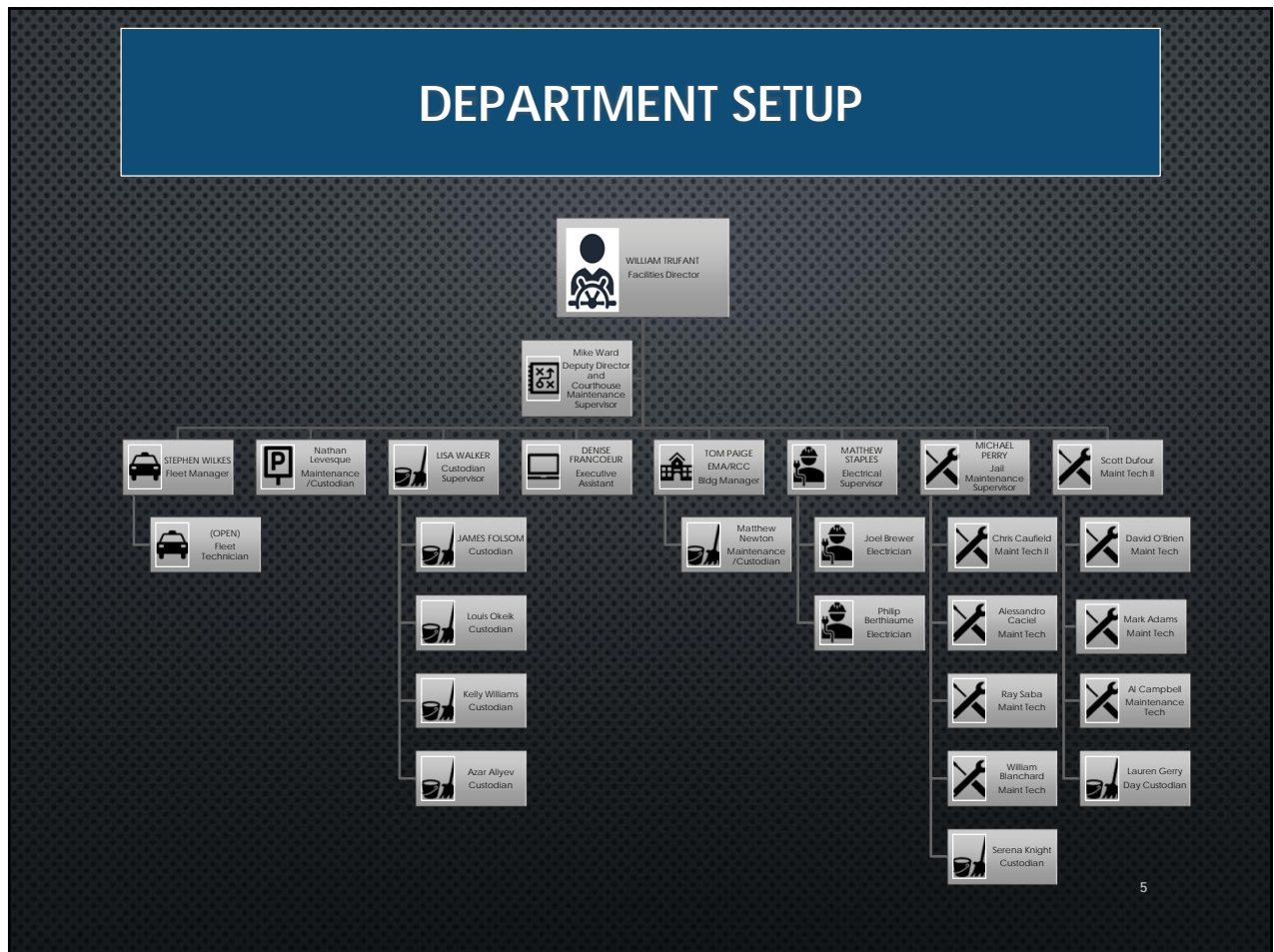
### ELECTRICAL DIVISION

- RESPONSIBLE FOR THE CARE AND MAINTENANCE OF THE CRITICAL SYSTEMS THAT MAKE COUNTY OPERATIONS POSSIBLE AT ALL COUNTY MANAGED LOCATIONS.
- ITEMS INCLUDES BACKUP POWER, ACCESS CONTROLS, FIRE ALARM SYSTEMS, LIGHTING, AND BUILDING SURVEILLANCE.
- CURRENTLY HAVE 3 FULL TIME MASTER ELECTRICIANS WHO SHARE THE RESPONSIBILITIES AND ACTIVELY SHARE AFTER HOUR EMERGENCY RESPONSES.

### FLEET SERVICES

- RESPONSIBLE FOR THE CARE AND MAINTENANCE OF ALL COUNTY VEHICLES AND EQUIPMENT. THIS INCLUDES ALL SHERIFF DEPARTMENT CRUISERS, COMMAND VEHICLES, GENERAL PURPOSE UNITS, AND SNOW OPERATION EQUIPMENT.
- RESPONSIBLE FOR ASSISTING SHERIFF'S OFFICE IN PROCURING NEW VEHICLES AND THEIR SETUPS.
- CURRENTLY HAVE 1 FULL TIME FLEET TECHNICIAN, WITH 1 VACANCY, THAT ARE RESPONSIBLE FOR OVER 150 ASSETS THAT DRIVE THROUGHOUT THE COUNTY.

4



## COUNTY JAIL & SHERIFF'S DEPARTMENT COMPLEX



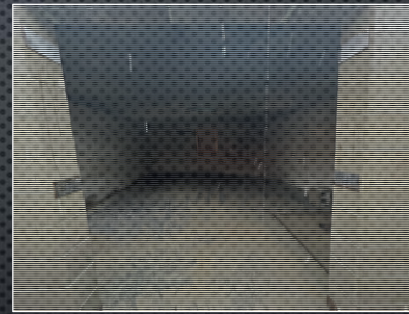
- 14.25 acre campus with 163,800 sf of occupied space
- 6 full time Maintenance/Custodial employees
- 2 full time Fleet employees
- 2 full time electricians (mobilized county-wide)

Responsibilities include all interior trade work (plumbing, electrical, carpentry, custodial) and exterior work (plowing/treating roadways, landscaping, and general grounds upkeep) as well as complete vehicle service work for our Fleet.

## COUNTY JAIL & SHERIFF'S DEPARTMENT COMPLEX UPGRADES

UPGRADE	LOCATION	COST	STAGE
Medical Expansion w/4 Air Handler Replacements	Jail	~\$9,500,000	65% completion with expected closeout Spring 2025
Door Control Upgrade	Jail	~\$3,000,000	15% Completion with expected late 2025
Roof	LEC	~\$150,000	Completed

# COUNTY JAIL & SHERIFF'S DEPARTMENT RECENT UPGRADE





## COUNTY COURTHOUSE COMPLEX



COUNTY (1910)



PARKING GARAGE



STATE (1993)

- 1.5912 acre complex with ~228,950 sf of occupied space
- 5 full-time Maintenance employees
- 1 full-time Electrician
- 6 full-time Custodians

Responsibilities include all interior trade work (plumbing, electrical, carpentry, custodial) and exterior work (plowing, treating roadways, landscaping, and general grounds upkeep). Also includes maintaining the parking garage operations.

## COUNTY & STATE PARTNERSHIP BENEFITS

### SYMBIOTIC

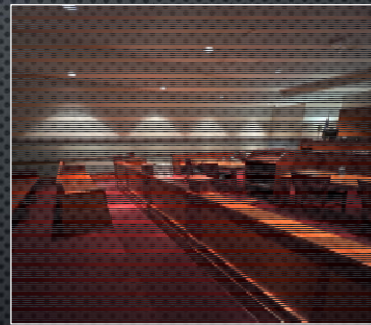
- WHILE THE OVERALL UPKEEP OF COURTHOUSE COMPLEX ARE COSTLY TO UPGRADE AND MAINTAIN, THE COST IS SHARED WITH THE STATE DUE TO AN ACTIVE LEASE
- MAINTENANCE AND CUSTODIAL COST FOR EMPLOYEES AND SUPPLIES ARE SHARED SO BULK RATES ARE UTILIZED
- THE COUNTY USES THE MARSHALL'S SERVICE FOR SECURITY WHICH IS PROVIDED BY THE JUDICIAL BRANCH FOR ENTRY INTO THE BUILDING



## COUNTY COURTHOUSE COMPLEX UPGRADES

UPGRADE	COST	STAGE
Air Handler Replacement w/Controls Upgrade	~\$4,000,000	Late 2025
Parking Garage Phase Repairs	~\$500,000	Completed 2024
Courtroom Upgrades	\$100,000	Ongoing

# COUNTY COURTHOUSE COMPLEX UPGRADES



## WINDHAM COMPLEX



Regional Communications  
Emergency Management

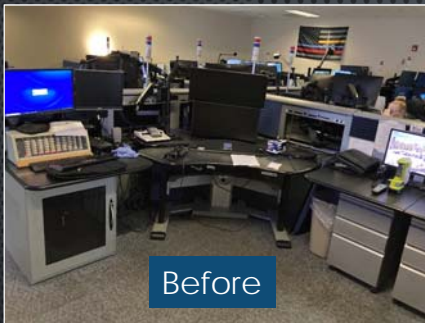


- 4.40 acre complex with ~8,000 sf of occupied space
- 1 full-time Maintenance employee
- 1 full-time Custodial employee

Responsibilities include all interior trade work (plumbing, electrical, carpentry, custodial) and exterior work (plowing, treating roadways, landscaping, and general grounds upkeep).

13

# WINDHAM COMPLEX DISPATCH UPGRADES



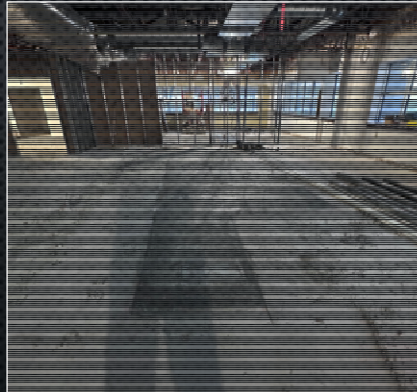
## NORTHPORT ADMINISTRATION BUILDING



- ~33,000 sf of occupied space
- Anticipated 1 full-time Maintenance employee
- Anticipated 1 full-time Custodial employee

Responsibilities include all interior trade work (plumbing, electrical, carpentry, custodial)

## NORTHPORT ADMINISTRATION BUILDING PROGRESS

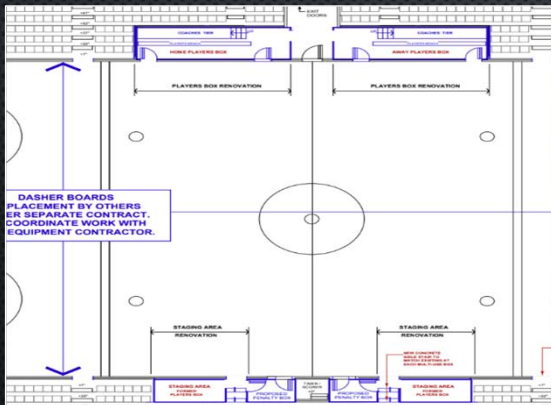




## CROSS INSURANCE ARENA COMPLEX PROJECTS



BEFORE



- Responsibilities include project oversight of capital items.
- Share staff at times to assist with major items that need extra hands.
- Work together to bounce ideas off each other for operational needs.

## CROSS INSURANCE ARENA COMPLEX PROJECTS



AFTER



Thank you  
for your time and attention.

Any Questions?

