

Prepared for

Cumberland County Facilities
Department
Suite 1
Architecture/Engineering Services
Proposal
Attention: Bill Trufant, Facilities Director
42 Federal Street
Portland, Maine 04101

Prepared by

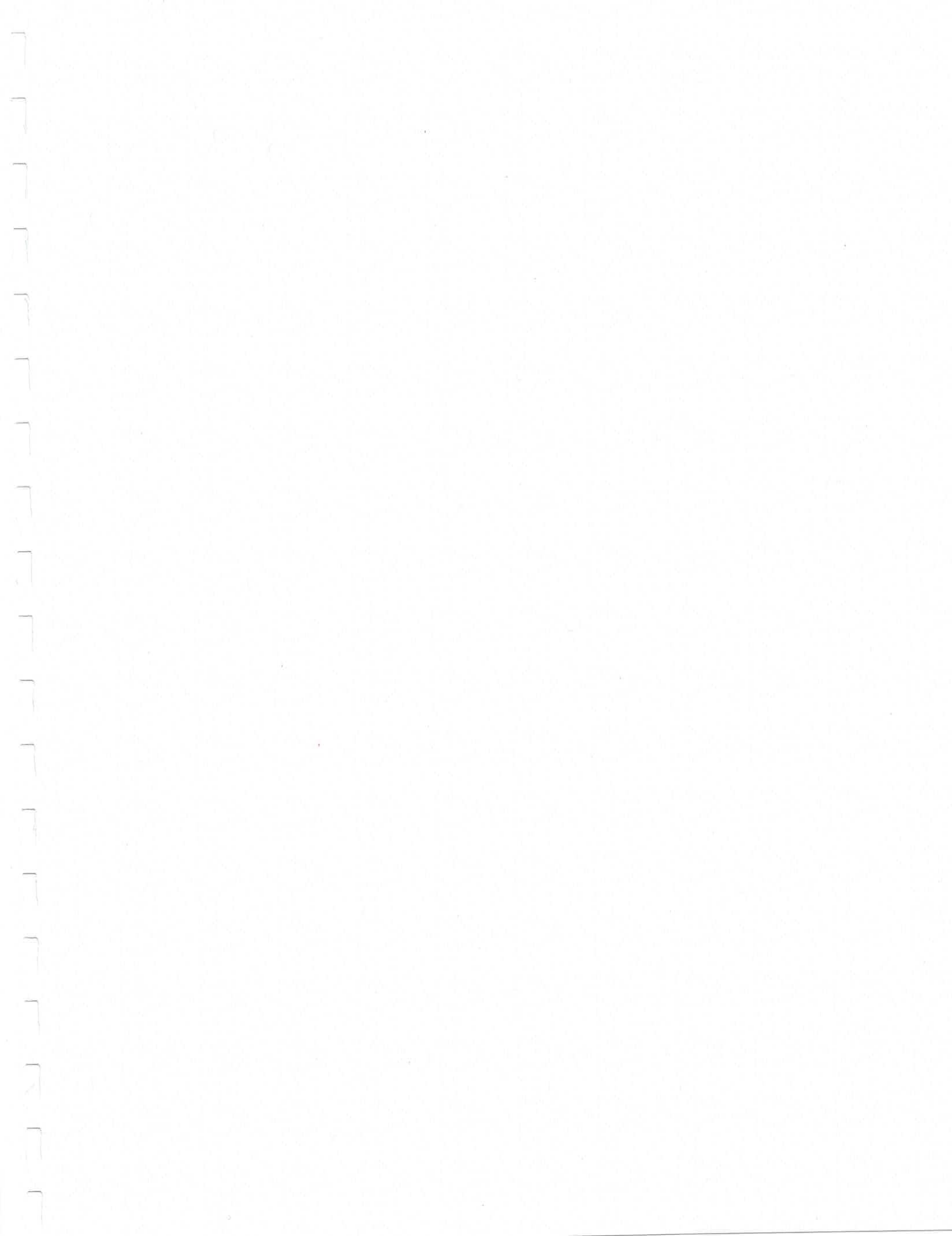
Ethan Rhile, P.E.
Associate Principal, Portland Office
Director
Thornton Tomasetti, Inc.
14 York Street, Suite 201
Portland ME 04101
T +1.207.558.8867 |
M +1.207.558.8867
ERhile@ThorntonTomasetti.com
www.ThorntonTomasetti.com

February 5, 2025

PROPOSAL FOR

Cumberland County
Architecture, Engineering,
and Construction
Management Services

Portland, Maine



February 5, 2025

Cumberland County Facilities Department, Suite 1
Architecture/Engineering Services Proposal
Attention: Bill Trufant, Facilities Director
42 Federal Street
Portland, Maine 04101

RE: CUMBERLAND COUNTY ARCHITECTURE, ENGINEERING, AND CONSTRUCTION MANAGEMENT SERVICES

Dear Mr. Trufant,

Thornton Tomasetti, Inc. is please to submit the following proposal to provide engineering services for Cumberland County Architecture, Engineering, and Construction Management Services. We understand that Cumberland County is undertaking two projects at their properties: a full Roof System Replacement at the Cumberland County Jail; and a partial Window Replacement project at the Addition to the Cumberland County Courthouse.

Thornton Tomasetti is proud to be working with Cumberland County on the restoration of its parking garage since 2019 and would like to deliver the same quality of expertise, management and service on these projects. Beyond parking structures, our Renewals team has a range of experience evaluating and designing repairs for structural renewal, multidisciplinary building systems renewal, envelope renewal, and historic preservation. Specifically, we have experience in ballasted roofs, façade renovations, and we have also worked on many courthouses and public safety buildings.

To provide the county with optimal results, we propose splitting the scope. We have engaged CWS Architects to perform the Window Replacement project while Thornton Tomasetti will perform the Roof Replacement project as well as overall project management and oversight. Our firms have worked together on more than 35 projects, bringing familiar design and coordination experience to ensure the success of this arrangement and the results.

We would be pleased to discuss our proposal in more detail should you have any questions. We note that none of our owners, directors, officers or principals are closely related to any Cumberland County employee who may be involved in the evaluation of this proposal.

We appreciate the opportunity to submit our proposal and hope we may look forward to working with you on this project. Thank you for your consideration.

Regards,



Ethan Rhile, P.E.
Associate Principal, Portland Office Director
T +1.207.558.8867 | M +1.207.558.8867
ERhile@ThorntonTomasetti.com

EXECUTIVE SUMMARY WHY THORNTON TOMASETTI?

Thornton Tomasetti offers our clients a range of services that deliver benefits greater than the sum of their parts. Our structural and façade — and sustainability, resilience and protective design — capabilities afford us an unparalleled ability to help our clients plan, design, build, maintain, protect and renew structures of every kind. From project concept to completion, Thornton Tomasetti provides unique design, technical, consultation, diagnostic, construction phase and project management services for buildings of all types and vintages. Thornton Tomasetti is excited to expand upon the trust we've built with Cumberland County and become a partner you can count on to renew and restore your community buildings. Our goal, collectively with CWS, is to collaborate with you every step of the way, creating a clear, well-executed plan that prioritizes safety, security, and the long-term success of your facilities. We hope the enclosed qualifications make evident our talent and commitment to the success this project.

Thornton Tomasetti: Roofing and waterproofing expertise

In addition to structural engineering, Thornton Tomasetti's renewal experts across the firm have worked on all types of enclosures—from slate roofs to stone ballast, bitumen to membrane roofs, and from modern curtain walls to pre-war composite walls, and more. This experience means we can help with whatever our clients need: structural support, waterproofing, façade restoration, or roofing, windows, plazas and sidewalks. Our expertise in roofing and waterproofing systems draws from our depth of experience in their investigation, evaluation and design—ranging from new construction to the design of remedial measures for existing structures with water infiltration challenges. And because we connect expertise and ideas from experts across our firm, our proposed team can ensure the best solutions are brought to bear to Cumberland County's project. We've included a selective list of projects demonstrating a range of relevant experience.

CWS: Window replacement expertise

Renovation projects have been a core part of CWS Architect's portfolio for the past 30 years, giving them valuable experience in tackling the unique challenges these projects bring. Window replacements have been an integral part of their renovation work and they regularly take on projects requiring this scope, including historically sensitive replacements that demand period-specific framing and detailing. Their extensive work in building rehabilitation makes window replacement a familiar challenge — one they approach with precision and care. Enclosed, CWS has provided three reference projects, each of which involved the replacement of all exterior window units.

Correctional, government and higher security facility experience

Our team also understands that experience with correctional facilities and higher security facilities is important. Thornton Tomasetti has long-standing relationships with many municipal, city and federal government clients and has even played a key role in customizing their security criteria. This means we're sensitive to the differing criteria each agency has developed to meet its specific project needs and can bring a team that helps protect occupants and functionality while maintaining the aesthetics, operations and confidentiality of every project - from U.S. Embassies abroad to the Maine State Capitol Judicial Center in Augusta. In addition, CWS has worked closely with clients in both the private sector and on military bases to deliver successful outcomes, from complex phasing strategies to ensure buildings stay operational during construction, to addressing high safety and security requirements. Together, we understand the importance of confidentiality and precise control over sensitive information and are confident our skills will align seamlessly with the needs of this project.

PROPOSAL

We understand that the projects are intended to be completed sequentially with the Cumberland County Jail Roof Replacement reaching completion at the end of 2025 and the Window Replacement project at the Cumberland County Courthouse occurring in 2026. Our trusted team of industry experts will provide a holistic approach to determine and manage the repairs needed for Cumberland County. It is our understanding that the existing jail roof is a ballasted system, original to the building, and the county is looking at alternative replacement options.

Approach

Thornton Tomasetti brings a tradition of innovative and cost-effective design solutions to meet project needs. The firm has a staff of experienced engineers, architects and designers equipped to provide timely and responsive investigation, evaluation and design services for any of its specific project needs – from repairs to portions of building systems to full rehabilitation of large and complex roofing projects. Cost and constructability concerns are monitored through our project analysis and quality control program. We're committed to thinking creatively to arrive efficient and economic designs.

Roof replacement approach

The project begins with an initial start-up meeting with the client to review the project goals. Thornton Tomasetti will evaluate the existing conditions and prepare an investigation report. Feasible options for repairs and rehabilitation will be discussed broadly with Cumberland County to reach a clear consensus on how to meet the key project goals. Thornton Tomasetti will work closely with the client to study and recommend alternative approaches suited to the project's design, budget, and construction objectives. Thornton Tomasetti will then develop the appropriate design solutions in schematic form for review with the county. Once a design approach is decided upon, Thornton Tomasetti will proceed with preparing design drawings and construction documents. Thornton Tomasetti understands the intent for the construction documents to be expedited to start construction in 2025.

Site investigations (assumed 4-6 week duration pending access restrictions)

Thornton Tomasetti's building condition assessments will proceed in several steps. If available, Thornton Tomasetti will review recent roof inspection reports to learn from and build upon the previous investigation work. We will perform a general visual assessment of the roofs.

Following a review of the findings from these initial observations, we will identify locations on the roof to probe to determine the composition of the existing roofing system. A contractor will be used for the destructive openings. We will record the overall conditions observed with photographs, field notes, and sketches (utilizing the building drawings).

Design (assumed 6-8 week duration for owners review set)

Thornton Tomasetti will submit progress drawings to the county for review and comments, and all comments will be discussed and incorporated as needed. Proposed roofing types will be identified, and necessary details based on the design conditions will be provided.

Related repair/design details and specifications will be coordinated and issued based on the schedule as discussed in our initial meeting.

PROPOSAL (CONTINUED)

Construction Administration (varies pending roofing type, assumed 12 week duration)

Thornton Tomasetti will also provide the necessary services through the bidding and construction administration phase. We anticipate this will involve prebid meetings, responding to RFI's during the bid process, and assisting in your selection of a Contractor. Thornton Tomasetti is expecting weekly visits during this phase.

Window Replacement

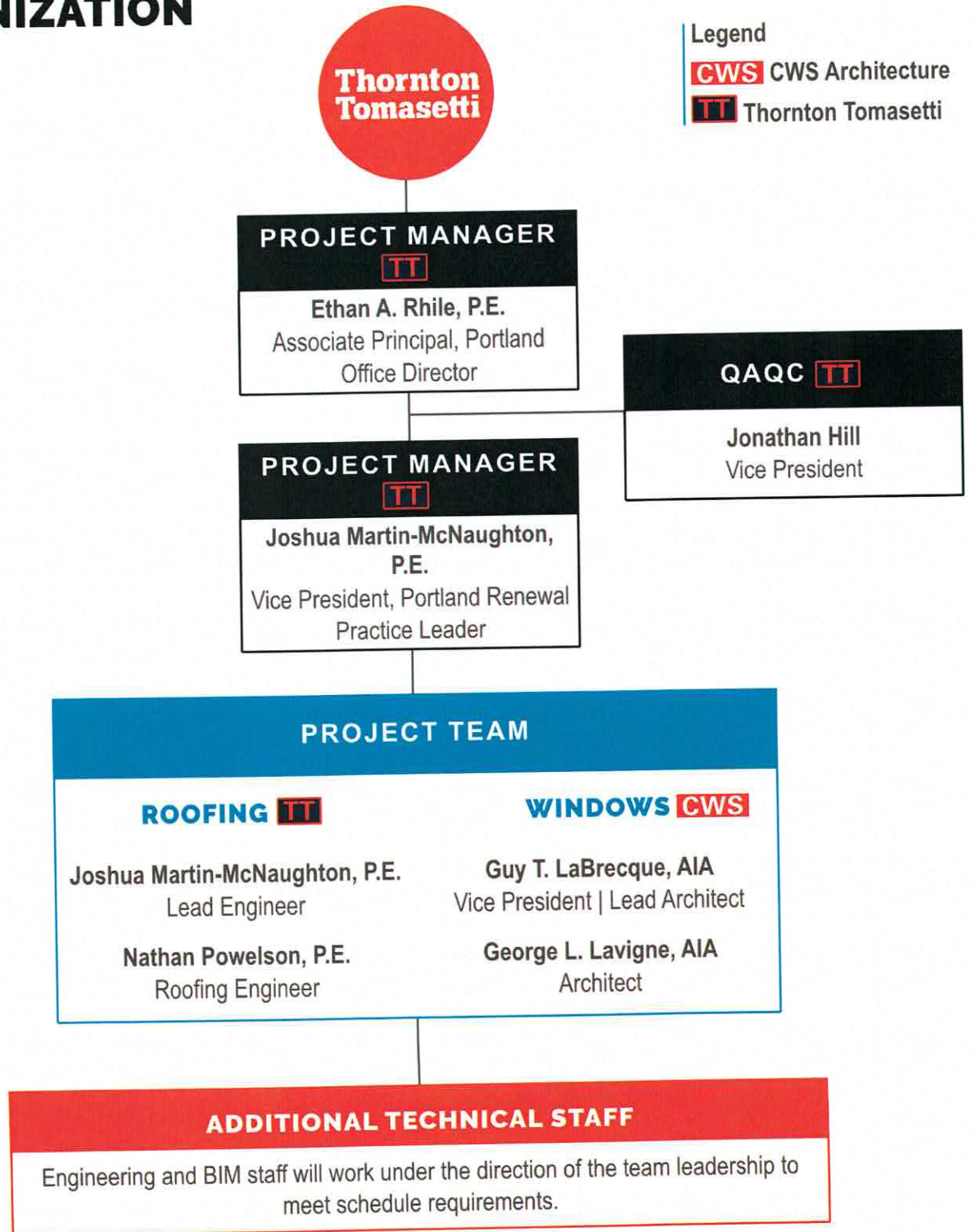
Many of our projects require blower door and window air infiltration testing to meet funding requirements, and we anticipate that this project will involve replacing aluminum window units with similar products. We also recognize that the existing perimeter flashing and enclosure systems may not align with current air infiltration detailing, a challenge we are well-versed in addressing. Depending on feasibility, we will explore solutions to either rectify these conditions or determine if modifications would be too costly and invasive. Once we have a clearer understanding of the exterior wall assembly and its detailing, we will provide a well-informed recommendation and work closely with the county to determine the best path forward.

Schedule/Approach (Bid documents to be completed by May of 2026):

CWS and Thornton Tomasetti will work very closely with the county to obtain a complete understanding of the constraints and concerns posed by this project. From this dialogue, we will produce phased construction documentation that aligns with applicable regulations and codes.

CWS and Thornton Tomasetti recognize the goal of completing the window replacement construction work by August of 2026. This will require the design team to engage this spring in meetings with the key stakeholders and initiating the field investigations in the 1992 wing, then move directly into the documentation process. Bidding documentation should be completed no later than the first of May, 2026. Bidding and contractor contracting will be a five-to-six week effort. Construction permitting could take an additional four weeks, after the contractor is selected. If it is acceptable to initiate the permitting process during bidding process, this may be expedited.

TEAM ORGANIZATION



Legend

CWS CWS Architecture

TT Thornton Tomasetti

ETHAN A. RHILE, P.E.

Associate Principal, Portland Office Director



Project role

Principal in Charge

Summary

Ethan joined Thornton Tomasetti in 2001 and directs the Portland office. He brings decades of experience in the evaluation and restoration of historic structures, including masonry facades and roofing. He leads technical designs, quality control, construction administration and oversight.

Education

- B.S. Civil Engineering, 1996, Pennsylvania State University

Registrations

- Licensed Professional Engineer in ME, PA

Professional activities

- Member, American Institute of Steel Construction (AISC)
- Member, Structural Engineers Association of Maine (SEAM)

Select project experience

University of Maine, Center for Cooperative Aquaculture Research, Franklin, ME. Structural engineering services for an aquaculture research facility. Scope included structural evaluation of the roof structure as a result of moisture-thermal upgrades and design of repairs to deflected roof trusses.

Galt Block Hotel, Portland, ME. Structural engineering services for the renovation for a five-story, 41,500-square-foot, brick and timber warehouse built in 1870 into boutique hotel. The scope of work included lowering the basement floor to accommodate back-of-house services as well as pile supported, code compliant stairs, elevator modifications, reframing of portions of the roof to create shed dormers, and roof modifications to support mechanical equipment.

Maine State Capitol Judicial Center, Augusta, ME. Structural engineering and LEED energy and design assistance modeling services for the design and construction of a 118,000-square-foot judicial center and a pedestrian bridge. The scope also included façade review and structural roof repairs at the Kennebec County Courthouse.

State of Maine District Courthouse, York Judicial Center, Biddeford, ME. Structural design and construction administration services for the 115,000-square-foot, three-story state court facility housing 10 courtrooms, a mediation suite and detention areas. The highly sustainable building is all-electric with rooftop photovoltaics.

Bates College, Chapel Restoration, Lewiston, ME. Restoration services to stabilize and repair damaged, deteriorated, and non-functioning material, reduce water infiltration while respecting the historic architecture. Scope entailed review and evaluation of the condition of the masonry walls, slate roofing and stained glass window assemblies and additional field investigations to develop complete repair and restoration drawings and specifications.

The East Campus, Deering Building Evaluation, Augusta, ME. Structural engineering services to convert the former Health Institute, constructed in 1957, for use as office. Scope included roof reinforcement due to insulation improvements and structural modifications.

GUY T. LABRECQUE, AIA

Vice President

CWS ARCHITECTURE +
INTERIOR DESIGN



Project role

Lead Architect, Window Replacement

Summary

Throughout his career, Guy has been routinely involved in interior and exterior renovation projects. He assesses buildings and tenant spaces for potential purchase or when building upgrades and repairs are being considered. He works closely with his clients to develop a thorough understanding of their hopes and needs.

Education

- Master of Architecture, 1989, College of Architecture, Montana State University,

Registrations

- Licensed Architect in ME, MA, NH, RI, CT, NJ, PA, GA

Professional activities

- Member, American Institute of Architects

Select project experience

Fiber Materials Incorporated, 20 Morin Street, Biddeford, ME. Multi-phase renovation to the existing building. Design services include a fit-up to the existing building that embodies classified spaces, potential shop floor office space, toilet rooms, and support space.

Fiber Materials Incorporated, 28 Pond View Drive, Scarborough, ME. Building Assessment for a potential space that would be leased and fit-up for future growth by FMI. Assessment includes both exterior and interior architectural components, approximate evaluation of staff capacity and support space, and opportunities for future planning.

Consolidated Communications, Portland, ME. Consolidation of two buildings into one existing, occupied, three-story building. Included a furnished swing space and phased renovation to occupied spaces throughout all three floors.

*Denotes work performed with previous employer.

TEAM BIOS



JOSHUA MARTIN-MCNAUGHTON, P.E.

Vice President, Portland Renewal Practice Leader |
Project Manager, Lead Roofing Engineer

Registrations

Licensed Professional
Engineer in ME

Joshua joined Thornton Tomasetti in 2013 and leads the Renewal group in Portland. He has extensive experience working with existing buildings, including investigating deficiencies, performing condition surveys, and remediating building envelope and structural inadequacies for parking garages and historical structures. His building envelope experience includes roofing (flat and steep), flashings, plaza/garage/foundation waterproofing systems and air/vapor barriers. With every project, Josh seeks to bring back the original aesthetic of a building while providing effective, long-term solutions to building failures. Josh has been leading the rehabilitation of the parking structure with Cumberland County since 2019 and also lead the Roof Analysis for the Cross Insurance Arena. He also manages work for the cities of Portland, Lewiston, Bangor, Nashua and Auburn.

Education

B.S., Civil Engineering Technology, 2008, Wentworth Institute of Technology



NATHAN POWELSON, P.E.

Project Engineer | Roofing Engineer

Registrations

Licensed Professional
Engineer in GA, ME, RI,
NV

Nate joined Thornton Tomasetti in 2022 bringing to the team 13 years of experience in investigating deficiencies, performing condition assessments, repair documentation and construction observation of existing buildings. He is an expert on 3rd party quality assurance with an emphasis on building envelope, MEP and structural systems throughout the country. Nate has supported the rehabilitation of Cumberland County's parking structure and also analysis of the Cross Insurance Arena roof, alongside Josh. He has been involved in both flat and sloped roof assessments, split slab waterproofing, and flashing design at federal and state buildings including the Prince Jonah Kūhiō Kalaniana'ole Federal Courthouse and Inouye International Airport 3rd Level Roadway.

Education

M.S. Civil and Structural Engineering, 2010, University of Hawai'i

B.S. Civil and Environmental Engineering, 2007, Clarkson University

TEAM BIOS (CONTINUED)**Registrations**

Licensed Architect in ME
and NH

GEORGE L. LAVIGNE, AIA

Vice President | Architect, Window Replacement

CWS ARCHITECTURE +
INTERIOR DESIGN

George has extensive experience in all facets of residential life design including senior and family apartments, group homes and assisted living communities. In addition to ground-up new construction, his practice has substantially focused on adaptive re-use and historic preservation of New England's historic built environment. To this end, George's projects have been awarded numerous local, regional and national housing industry and historic preservation awards. His experience includes the Cony Flat Iron Apartments, the South Portland Community Center, and Phoenix Flats — with Thornton Tomasetti.

Education

Master of Architecture, College of Architecture, 1996, Montana State University

**Registrations**

Licensed Professional
Engineer in CA

JONATHAN HILL, P.E., CPENG

Vice President | QAQC

Jonathan joined Thornton Tomasetti in 2024, bringing more than 19 years of experience in the design, investigation and construction contract administration of building enclosure and façade systems. He manages projects involving window replacements and re-clads on buildings of all vintages. He has overseen major projects in the U.S. and in New Zealand that have encompassed waterproofing consulting on roofs, plaza areas, and below-grade spaces, as well as the design and evaluation of façade and other building enclosure components, both standard and bespoke.

Education

B.A.E., Structural focus, 2005, The Pennsylvania State University

STATEMENT OF EXPERIENCE

Thornton Tomasetti's select projects

Maine State Capitol Judicial Center, Augusta, ME. Structural engineering and LEED energy and design assistance modeling services for the design and construction of a 118,000-square-foot judicial center and a pedestrian bridge. The scope also included façade review and structural roof repairs at the Kennebec County Courthouse. *Owner: State of Maine Judicial Branch | Completion date: 2014 | Cost: \$57 million*

State of Maine District Courthouse, York Judicial Center, Biddeford, ME. Structural design and construction administration services for the 115,000-square-foot, three-story state court facility housing 10 courtrooms, a mediation suite and detention areas. The highly sustainable building is all-electric with rooftop photovoltaics. *Owner: Maine Judicial Branch | Completion: 2023 | Cost: \$42 million*

Buffalo AKG Art Museum, Buffalo, NY. Condition assessment of the façades, roofs and below-grade areas, including the original 1905 building and 1962 modern addition, as part of the Albright-Knox Art Gallery's recent transformation. The project involved replacing the existing copper roof with a reinforced liquid membrane and consulting on the stone ballast roof systems of the modern addition.

Ford Foundation, New York, NY. Façade restoration and roofing services included removal and replacement of the roofing and waterproofing systems, which included stone ballast roofs, to resolve systemic leaks and preserve the building's historic character.

The Solomon R. Guggenheim Museum, New York, NY. Roofing upgrade included the investigation, design, and construction administration of various roofing systems, including stone ballast roofs. The team provided detailed design and technical specifications, coordinated with manufacturers, and ensured compliance with warranty requirements.

Scarborough Public Safety Building, Scarborough, ME. Structural engineering services for a 53,000-square-foot combined police and fire station. The station consists of apparatus bays, police garage, police and fire supportive services, fitness area and locker rooms at the lower level. We worked to fast-track the project ahead of the completed architectural design to accelerate the schedule. *Owner: Town of Scarborough | Completion date: 2019 | Cost: \$21.5 million*

CWS ARCHITECTURE +
INTERIOR DESIGN

HARBOR TERRACE, Portland, ME. Built in 1973, mechanical and envelope upgrades are the primary focus of this project, along with improved accessibility, updates to the main entrance, and unit and common space upgrades. To improve energy costs and efficiency, the building is getting a brand new heating and cooling system, a new insulated exterior metal panel system and new windows. *Owner: Portland Housing Authority | Completion Date: in construction | Cost: \$26 million*

75 STATE STREET, Portland, ME. The five-story independent and assisted living facility for seniors. It was originally built in the 1970s and 80s and Our team has provided services over past the two decades. Architecture and interior design, furnishings, interior signage and artwork were incorporated in the renovations to the administration and main entrance area. The replacement of existing windows and building systems were added to increase indoor air quality and improve energy efficiency. *Owner: Avesta Housing | Completion date: ongoing | Cost: \$2.1 million*

STATEMENT OF EXPERIENCE (CONTINUED)

Department of Health and Human Services Office, Portland, ME. Structural design of a 54,000-square-foot facility for a 150-per-square-foot floor live load to provide future layout flexibility. Scope included implementation and administration of the special inspections program required by the BOCA Building Code. *With CWS Architects*

Walpole Central Fire Station, Walpole, MA. Structural design of a new 18,000-square-foot fire station to house six apparatus bays, office spaces, sleeping quarters and support spaces. The rear side of the building showcases an 18-foot cantilever covering the bay entrances.

Hartford Central Fire Station Renovation and Expansion, Augusta, ME. Structural design services under a design-build contract for the renovation and an addition to the Augusta Fire Department, originally built in 1920. The scope of work included renovations, floor repairs and strengthening, insulation of the roof, and ADA compliance. The addition expanded training space and sleeping quarters.

Westbrook Public Safety Building, Westbrook, ME. Structural design services for a 42,000-square-foot facility. The program includes three levels, including a firing range below grade. The apparatus wing is a one-story, high-bay building.

Bates College, Roger Williams Hall and Hedge Hall, Lewiston, ME. Structural design for the renovation of and additions to two, 19th-century historic buildings. Project scope included a structural assessment, removal and re-construction of the roof structures, seismic upgrades that incorporated new structural steel columns and beams, reconstruction of exterior and interior load-bearing walls.

Bates College, Chapel Restoration, Lewiston, ME. Restoration services to repair and/or stabilize damaged, deteriorated, and non-functioning material and components and reduce water infiltration. Scope entailed condition review and evaluation of the masonry walls, slate roofing and stained glass window assemblies and develop complete repair and restoration drawings and specifications.

Jesup Memorial Library Addition, Bar Harbor, ME. Structural engineering services for a 12,000-square-foot addition and minor structural modifications and repairs to the library. Repairs included design services for the roof anchor that fastened the existing library's perimeter stone gutter wall cap.

CONY FLAT IRON

APARTMENTS, Augusta ME. The renovation of the flatiron building into senior apartments included exterior envelope improvements to increase energy efficiency, involving complete removal and replacement of windows and all exterior door assemblies, as well as complete repair of existing masonry. *Owner: Housing Initiatives of New England*
Date of completion: 2015 (2 year construction) | Cost: \$8.3 million

Select higher-security facilities

Fiber Materials Incorporated A
 Spirit Aerosystems Company -
 Project Abram

Fiber Materials Incorporated A
 Spirit Aerosystems Company -
 Project Lopic

Portsmouth Naval Shipyard,
 P293 Paint, Blast, Rubber
 Facility

Portsmouth Naval Shipyard,
 B178 VA Class Waterfront
 Support Facility

REFERENCES

Thornton Tomasetti

City of Portland, Parking Garage Restoration On-Call

John Peverada, Parking Manager
City of Portland
City Hall, Room 20-389, Congress Street
(207) 874-8444
jbp@portlandmaine.gov

City of Augusta, Dickman Parking Garage Repairs

Dan Mastrogiorgio
Facilities Manager
City of Augusta, Facilities Bureau
(207) 626-2365
dan.mastrogiorgio@augustamaine.gov

Portland Public High School Renovation and Repairs

Tammara Sweeney
Assistant Director, Facilities
Portland Public Schools
(440) 413-6675 (cell)
sweent@portlandschools.org

CWS Architecture

John Mallia, General Manager
4 Saunders Way, Westbrook, ME 04092

Bill Dodge Auto Group

(207) 854-3000
jmallia@billdodgeautogroup.com

John Simoneau, Sr. Capital Projects Manager

Bowdoin College

3800 College Station, Brunswick, ME 04011
(207) 725-3979
jsimonea@bowdoin.edu

Matthew Haas, CFM, Facilities Manager

Fiber Materials Inc.

5 Morin St., Biddeford, ME 04005
(207) 282-7060
mhaas@fibermaterialsinc.com

Mike Ouellet, President

Ouellet Construction

56 Bibber Parkway, Brunswick, ME 04011
(207) 725-0100
mike@ocmaine.com

Pete Malikowski, Senior Project Engineer

CIANBRO Constructors

517 South Main Street, Brewer, Maine 04412
(207) 416-8374
PMALIKOW@cianbro.com

LICENSES

State of Maine



Department of the Secretary of State

I, the Secretary of State of Maine, certify that according to the provisions of the Constitution and Laws of the State of Maine, the Department of the Secretary of State is the legal custodian of the Great Seal of the State of Maine which is hereunto affixed and of the records of qualification of foreign business corporations in this State and annual reports filed by the same.

I further certify that THORNTON TOMASETTI, INC., a NEW YORK corporation, is a duly qualified foreign business corporation under the laws of the State of Maine and that the application for authority to transact business in this State was filed on October 19, 2007.

I further certify that said foreign business corporation has filed annual reports due to this Department, and that no action is now pending by or on behalf of the State of Maine to forfeit the authority to transact business in this State and that according to the records in the Department of the Secretary of State, said foreign business corporation is a legally existing corporation in good standing under the laws of the State of Maine at the present time.

In testimony whereof, I have caused the Great Seal of the State of Maine to be hereunto affixed, given under my hand at Augusta, Maine, this nineteenth day of August 2024.



Shenna Bellows

Shenna Bellows
Secretary of State

Authentication: 8005996



DEPARTMENT OF PROFESSIONAL AND FINANCIAL REGULATION BOARD OF LICENSURE FOR PROFESSIONAL ENGINEERS

ETHAN A. RHILE

PROFESSIONAL ENGINEER

License Number: PE10266
Status: Active
First Licensure: 12/23/2002
Expiration Date: 12/31/2025
CE Required By: 12/31/2025
CE Hours Required: 30

Business: THORNTON TOMASETTI INC
14 YORK ST STE 201
PORTLAND, ME 04101-4783

PROPOSED FEE

Thornton Tomasetti proposes the following sliding scale of costs based on the anticipated construction fees:

Construction Cost	Construction Cost Decease		Basis of Proposal	Construction Cost Increase	
	\$4,000,000.00	\$4,500,000.00		\$5,000,000.00	\$5,500,000.00
% of Construction Cost	7.70%	7.60%	7.50%	7.45%	7.40%
Proposed Fee	\$308,000.00	\$342,000.00	\$375,000.00	\$412,500.00	\$444,000.00

Thank You

for considering Thornton Tomasetti. We look forward to continuing our conversation.

Contact

Ethan Rhile, P.E.
Associate Principal, Portland Office Director
Thornton Tomasetti, Inc.
14 York Street, Suite 201
Portland ME 04101
T +1.207.558.8867 |
M +1.207.558.8867
ERhile@ThorntonTomasetti.com
www.ThorntonTomasetti.com